



ABA UFO INTERNATIONAL CORP.

Safety
&
Security

ISO-9001 / CE / UL / RoHS

COMPANY

1983

ABA Locks Manufacturing was founded by Mr. Miko Lee and located at Tien Hsiang Road, Hsin Chuang City with 1080 square feet of office space. Including Mr. Lee there were only five employees. Major products included a variety of lock cylinders, cam locks and switch locks. The company is founded on the principals of designing innovative, high quality products at competitive prices.

1985

The company moves to larger facilities on Shung Fond Road, Hsin Chuang City with 2340 square feet in space with 16 employees. The company achieves high growth due to the expansion of the computer industry.

1988

ABA continues extraordinary growth and moves into 7200 square feet facility to meet the needs of customers. ABA continues to invest in research and development and secure 10 domestic and international patents. ABA expands product line to include locks for motorcycles, telephone equipment, vending machines and security systems.

1993

ABA introduces the patented PAGODA pick proof locking system.

1994

ABA is certified as an ISO-9002 manufacturer.

1995

ABA assigns DIRAK as agent in Germany.

1996

ABA introduces the patented ABACO Locks.

1997

ABA invests in additional branch and factory in Shanghai.

1999

Factory in Shanghai, China is certified as an ISO-9002 manufacturer. And notebook/laptop lock is introduced with strong sales. May 2000 ABA moves to current location on Chung-Cheng Road, Hsin Chuang City.

2001

ABA introduces the Viperlock high security auto steering wheel anti-theft device.

2002

ABA builds up ERP system to improve company internal controls.

2003

ABA is going forward to the CRM (Customers Relationship Management) system and global service.

2004

Break traditional design of "X-Lock" came into being.

2005

ABA Interchangeable core system launch

2007

ABA dimple key system launch

2011

- ABA Electronic Cabinet Lock launch (#107450)
- ABA Code-back system launch (win the National Invention Award)
- ABA Join ALOA member (Associated Locksmiths of America)

2014

ABA High Security Internal Wave Key Lock system launch

2015

ABA ISO upgrades to ISO 9001: 2015



Business Philosophy

- Integrity
- Harmony
- Diligence and Positive
- Innovation and Action
- Open Minded

Quality Policy

- Cost Reduction
- Improvement Efficiency
- Quality Assurance
- Customer Satisfaction

Product Lines

- Cam Lock
- Key Switch Lock
- Lock Cylinder & Plunger Lock Cylinder
- Security Locks for Desktop / Laptop
- Steering Wheel Lock
- Hardware Accessories
- E-Lock System
- Total Solution Service
- Tooling Die-Casting, Stamping
- Die, Metal / Plastic Injection Parts
- OEM/ODM Items

Product Applications

- Enclosure
- Metal / Wooden Cabinet
- Safe and Vault
- Glass / Acrylic Showcase
- Locker
- Weapon Safety Devices
- Pay phone; Parking Meter; ATM
- Vending / Gaming Machine
- Machine and Equipment
- Laptop / Desktop Computer / PC Case
- Automobile ; Motorcycle; Bicycle
- Furniture
- Security Devices
- Doors



CONTENTS

1 Cam Lock P.02

2 Furniture Lock P.14

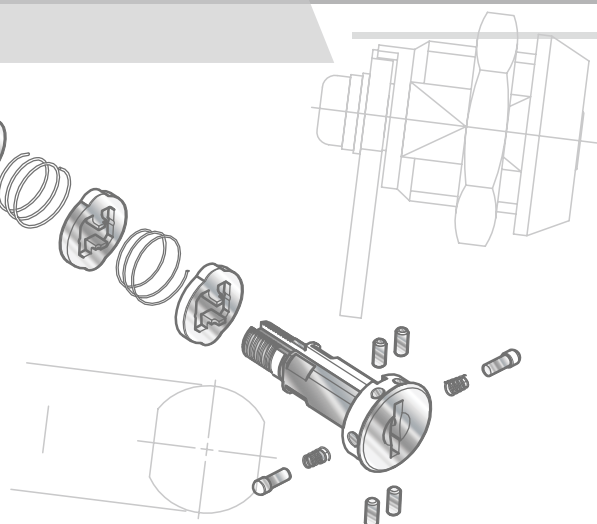
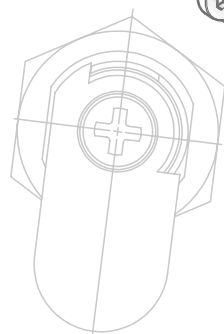
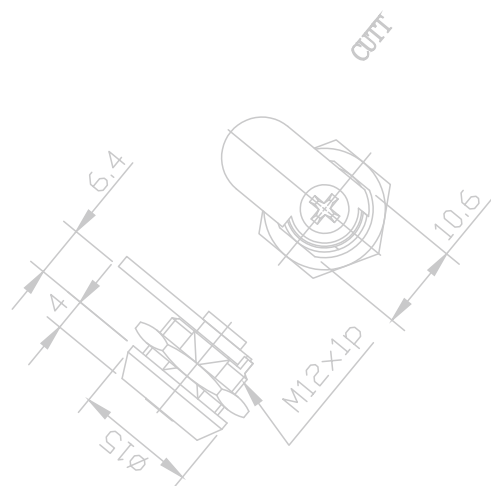
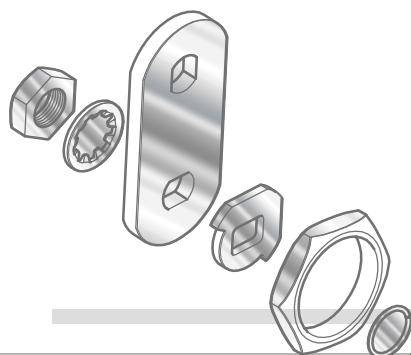
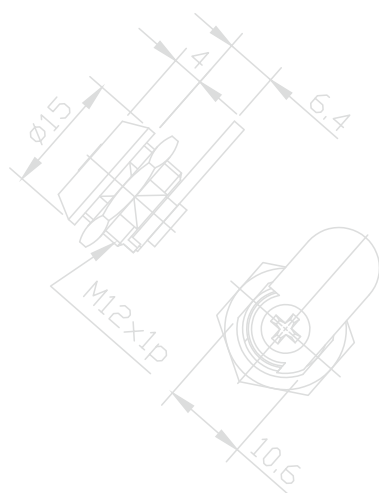
3 Combination Lock P.18

4 Switch Lock P.24

5 Plunger (Push-in) Lock P.30

6 Handle Lock
Locks Cylinder P.34

7 Accessories & Others P.40





101481



102200



110403



101230

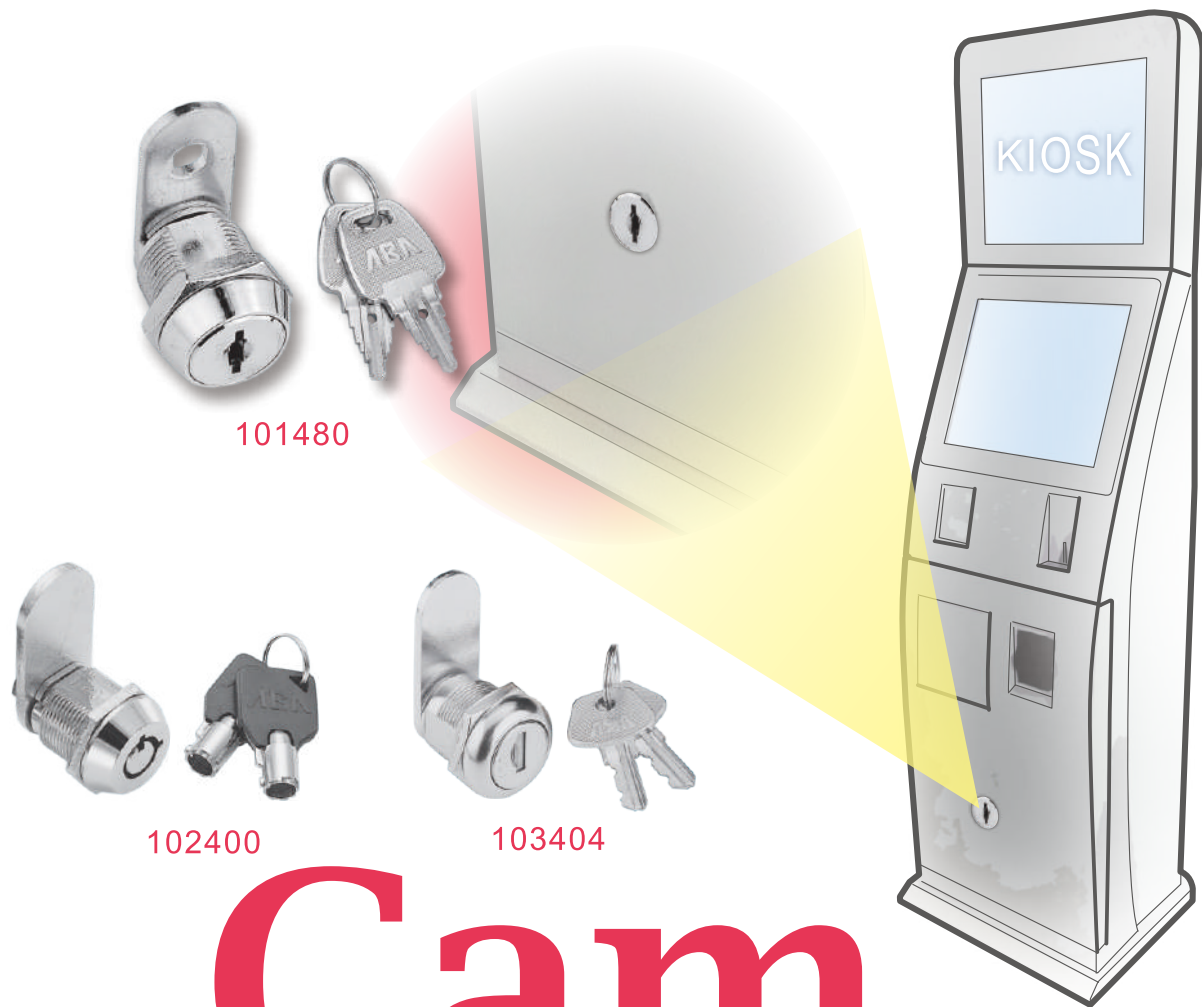


103403



109429





101480

102400

103404

Cam Lock

Ticket Machine • Kiosk • ATM • Subway Gate

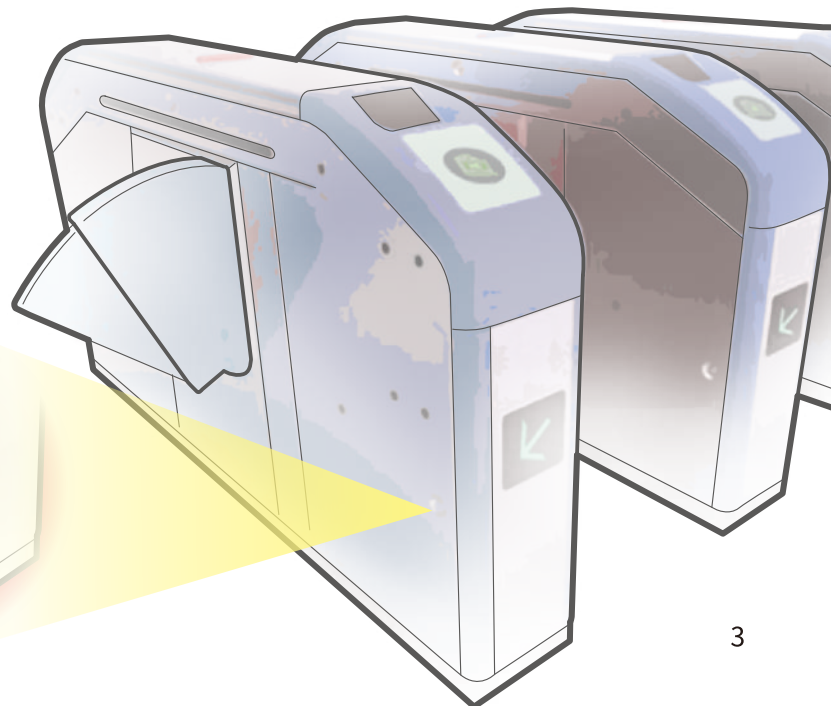


108418

104800



102410

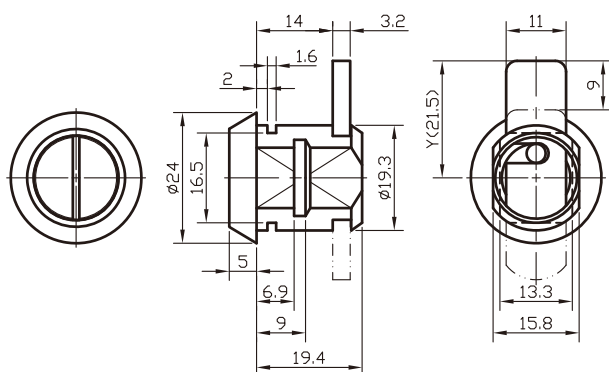



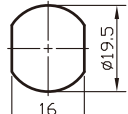
100756

Keyless Cam Lock (Coin Turn)



- ◆ Main Material : Zinc alloy housing & barrel
- ◆ Finish : Bright Chrome/Nickel plated
- ◆ Application : Metal/Steel Cabinet, Cupboard, Drawer, Locker, Drawers, OA furniture, etc
- ◆ Accessory : C-Clip
- ◆ Feature / Strength :
 1. Keyless system. By using a slotted screwdriver or coin to open the lock



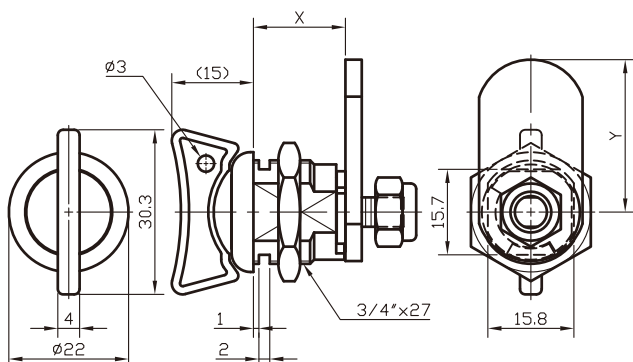
Item No.	Key Rotated Direction	Key Rotated Direction Fig	Y
10075600	A	Key Pull ↑ Rotation ↘ Direction  A	Various Sizes & Per customer request Installation Hole  Ø19.5 16


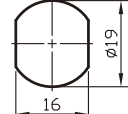
100781

Keyless Thumb Turn Cam Lock (Wing Handle)

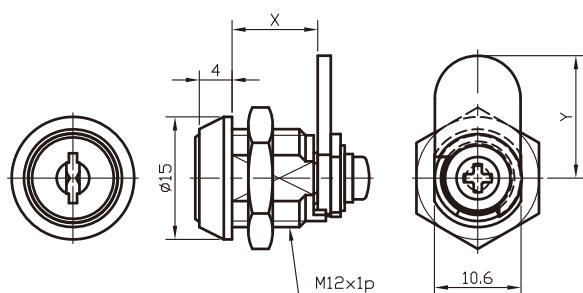


- ◆ Main Material : Zinc alloy housing and handle
- ◆ Finish : Bright Chrome/Nickel plated
- ◆ Application : Wooden/metal Cabinet, Cupboard, Electronics Enclosures, Kiosk, Amusement machine, Lightbox billboard, Mail box, etc
- ◆ Accessory : Hex Nut or C-Clip, Cam, Nylon-Insert Nut, Nut & cam (Various specs cams available upon specification)
- ◆ Feature / Strength :
 1. Rotate the wing handle to lock and unlock






Item No.	Key Rotated Direction	X	Key Rotated Direction Fig	Y
10078100	A	16.9	Key Pull ↑ Rotation ↘ Direction  A	Various Sizes & Per customer request Installation Hole  Ø19.5 16
10078103	A	22.7		
10078104	A	29		

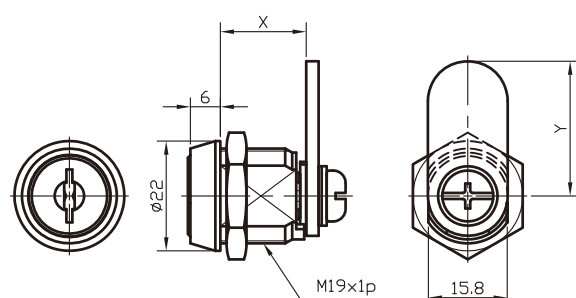
High Security Pagoda Cylinder (Miniature)












- ◆ Main Material : Zinc alloy housing & barrel
- ◆ Finish : Bright Chrome/Nickel plated
- ◆ Application : Metal/Non-Metal Cabinet, Cupboard, Drawer, Locker, Tool box, Cash box, Lightbox billboard, Mail box, Public pay phone, Subway gate, Gun safe, Safe box, Security chest, Amusement machine, Vending machine, ATM machine, Kiosk, Coin Operated Machine, etc
- ◆ Accessory : Nut & cam (Various specs cams available upon specification)
- ◆ Combination : Over 100 key combinations
- ◆ Feature / Strength :
 1. Master key system is available per request
 2. Lock barrel installed with 2 hardened steel anti-drill pins to prevent drill attempt
 3. Top security patented PAGODA system, with anti-picking function

Item No.	Key Rotated Direction	X	Key Rotated Direction Fig	Y
10123012	A	10.5 OR 11.7	↑ Key Pull ↑ Rotation ↘ Direction	Various Sizes & Per customer request Installation Hole
10123022	B			
10123014	A	13 OR 14.2		
10123024	B			
			 	

High Security Pagoda Cam Lock

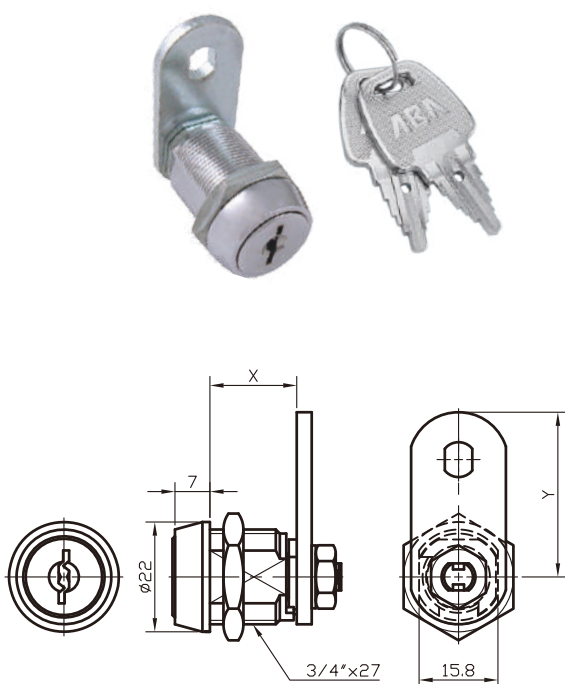


- ◆ Main Material : Zinc alloy housing & barrel
- ◆ Finish : Bright Chrome/Nickel plated
- ◆ Application : Metal/Non-Metal Cabinet, Cupboard, Drawer, Locker, Tool box, Cash box, Lightbox billboard, Mail box, Public pay phone, Subway gate, Gun safe, Safe box, Security chest, Amusement machine, Vending machine, ATM machine, Kiosk, Coin Operated Machine, etc
- ◆ Accessory : Nut & cam (Various specs cams available upon specification) The end barrel with screw fitting
- ◆ Combination : Over 10,000 key combinations
- ◆ Feature / Strength :
 1. Master key system is available per request
 2. Lock barrel installed with 2 hardened steel anti-drill pins to prevent drill attempt
 3. Top security patented PAGODA system, with anti-picking function

Item No.	Key Rotated Direction	X	Key Rotated Direction Fig	Y
10148012	A	17.2	<div>↓ Key Pull ↑ Rotation ↷ Direction</div> <div></div>	<div>Various Sizes & Per customer request Installation Hole</div> <div></div>
10148022	B or C			
10148013	E			
10148023	D	29.2	<div></div> <div></div>	
10148014	E			
10148024	D			

101481

High Security Pagoda Cam Lock

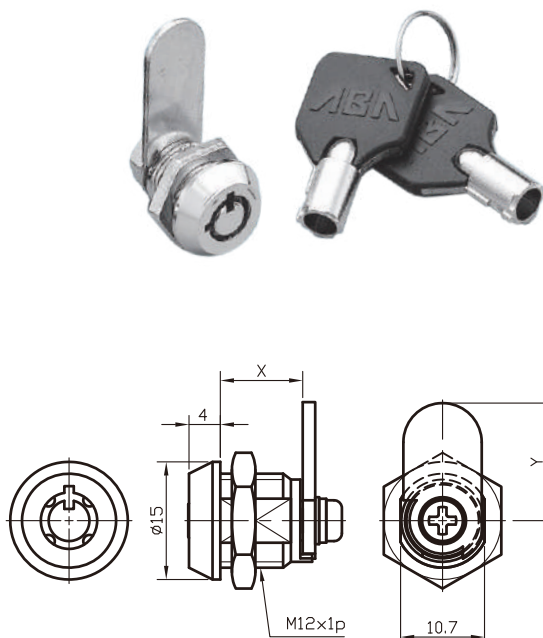


- ◆ Main Material : Zinc alloy housing & barrel
- ◆ Finish : Bright Chrome/Nickel plated
- ◆ Application : Metal/Non-Metal Cabinet, Cupboard, Drawer, Locker, Tool box, Cash box, Lightbox billboard, Mail box, Public pay phone, Subway gate, Gun safe, Safe box, Security chest, Amusement machine, Vending machine, ATM machine, Kiosk, Coin Operated Machine, etc
- ◆ Combination : Over 10,000 key combinations
- ◆ Accessory : Nut & cam (Various specs cams available upon specification). The end barrel with nut fitting
- ◆ Feature / Strength :
 1. Master key system is available per request
 2. Lock barrel installed with 2 hardened steel anti-drill pins to prevent drill attempt
 3. Top security patented PAGODA system, with anti-picking function

Item No.	Key Rotated Direction	X	Key Rotated Direction Fig	Y
10148112	A or D	17.4		Various Sizes & Per customer request
10148122	B or C	17.4		
10148113	A or D	23.4		Installation Hole
10148123	B or C	23.4		
10148114	A or D	29.4		
10148124	B or C	29.4		

102200

Security Tubular Key Cam Lock (Miniature)



- ◆ Main Material : Housing & Barrel with Brass or Zinc Alloy
- ◆ Finish : Bright Chrome/Nickel plated
- ◆ Application : Metal/Non-Metal Cabinet, Cupboard, Drawer, Locker, Tool box, Cash box, Lightbox billboard, Mail box, Public pay phone, Subway gate, Gun safe, Safe box, Security chest, Amusement machine, Vending machine, ATM machine, Kiosk, Coin Operated Machine, etc
- ◆ Combination : Over 500 key combinations
- ◆ Accessory : Nut & cam (Various specs cams available upon specification) The end barrel with screw fitting. (nut fitting is also available)
- ◆ Feature / Strength :
 1. 4-pin or 7-pin tubular mechanism
 2. Master key system is available per request function

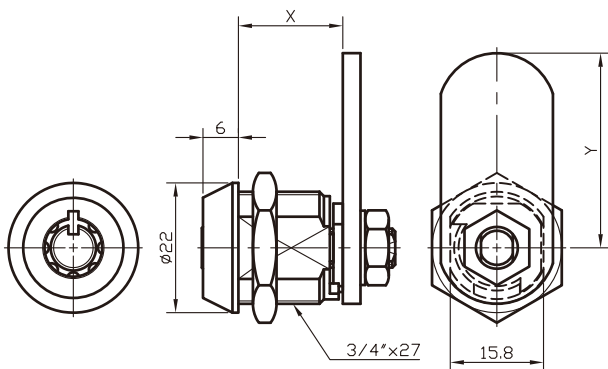
Item No.	Key Rotated Direction	X	Key Rotated Direction Fig	Y
10220012	A or D	(Screw)		Various Sizes & Per customer request
10220022	B or C	10.5		
10220014	A	(Screw)		Installation Hole
10220024	B or C	13		
10220012	A or D	(Nut)		
10220022	B or C	10.5		
10220014	A	(Nut)		
10220024	B or C	13		

102400

Security Tubular Key Cam Lock



- ◆ Main Material : Housing & Barrel with Brass or Zinc Alloy
- ◆ Finish : Bright Chrome/Nickel plated
- ◆ Application : Metal/Non-Metal Cabinet, Cupboard, Drawer, Locker, Tool box, Cash box, Lightbox billboard, Mail box, Public pay phone, Subway gate, Gun safe, Safe box, Security chest, Amusement machine, Vending machine, ATM machine, Kiosk, Coin Operated Machine, etc
- ◆ Combination : Over 10,000 key combinations
- ◆ Accessory : Nut & cam (Various specs cams available upon specification). The end barrel with nut fitting. (screw fitting is also available)
- ◆ Feature / Strength :
 1. Master key system is available per request
 2. Optional: 10-pin tubular mechanism for more key code combination changeable



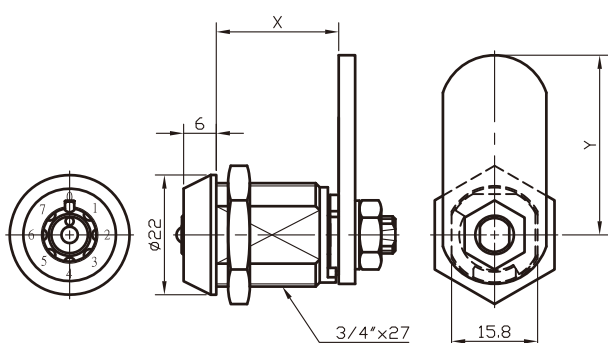
Item No.	Key Rotated Direction	X	Key Rotated Direction Fig	Y
10240011	A or E	12.5		Various Sizes & Per customer request Installation Hole
10240021	B or C or D	17.7		
10240012	A or E	22.7		
10240022	B or C or D	29		
10240013	A or E			
10240023	B or C or D			
10240014	A or E			
10240024	B or C or D			

102402

Security Tubular Magic Cam Lock (8-Change System)



- ◆ Main Material : Housing & Barrel with Zinc Alloy
- ◆ Finish : Bright Chrome/Nickel plated
- ◆ Application : Tool box, Lightbox billboard, Subway gate, Control boxes, Elevator as well as locker applications, cabinets, lockers, storage, etc. - anywhere needing flexibility of key code change for various users
- ◆ Combination : 8 Code changeable
- ◆ Accessory : Nut & cam (Various specs cams available upon specification)
- ◆ Feature / Strength :
 1. Each lock set comes with 8 operating keys + 1 change key
 2. Lock face with Red dot index, indicating Pre-set number
 3. Change Key only adjust key combination, operating keys for locking/unlocking
 4. The change key can also be rekeyed to all the locks in a system without removing and reassembling the locks
 5. Locks can be KA or KD, either to your existing code or new code



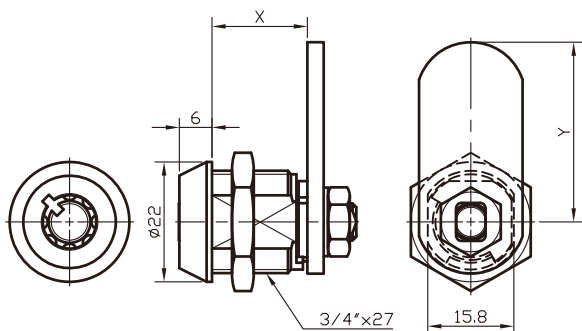
Item No.	Key Rotated Direction	X	Key Rotated Direction Fig	Y
10240212	A	17.5		Various Sizes & Per customer request Installation Hole
10240213	A	22.5		
10240214	A	29		





102410

High Security ABACO Tubular Cam Lock



- ◆ Main Material : Housing & Barrel with Brass or Zinc Alloy
- ◆ Finish : Bright Chrome/Nickel plated
- ◆ Application : Metal/Non-Metal Cabinet, Cupboard, Drawer, Locker, Tool box, Cash box, Lightbox billboard, Mail box, Public pay phone, Subway gate, Gun safe, Safe box, Security chest, Amusement machine, Vending machine, ATM machine, Kiosk, Coin Operated Machine, etc
- ◆ Combination : Over 10,000 key combinations
- ◆ Accessory : Nut & cam (Various specs cams available upon specification). The end barrel with nut fitting
- ◆ Feature / Strength :
 1. Master key system is available per request
 2. Security patented ABACO system, with anti-picking & anti-pin flip function



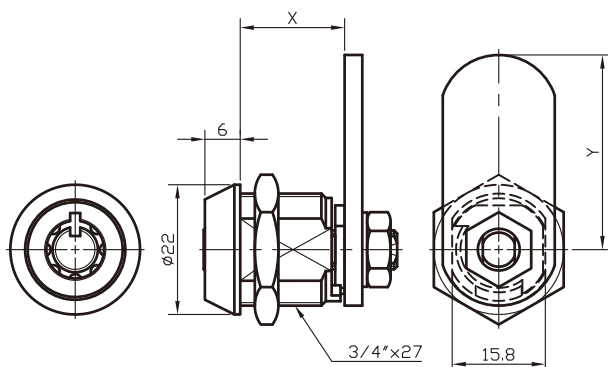
Item No.	Key Rotated Direction	X	Key Rotated Direction Fig	Y
10241012	A or B	17.5	<div>↑ Key Pull</div> <div>↓ Rotation</div> <div>↘ Direction</div> <div></div> <div>A B C</div>	Various Sizes & Per customer request Installation Hole 
10241022	C			
10241013	A or B	22.5		
10241023	C			
10241014	A or B	29		
10241024	C			

102430

Interchangeable Core - Tubular Key Cam Lock



- ◆ Main Material : Zinc alloy housing & barrel
- ◆ Finish : Bright Chrome/Nickel plated
- ◆ Application : Typical applications for the range include metal/wooden cabinets, boxes, lockers which used for office buildings, Universities, Apartments, Perimeter, Doors, Schools and Hospitals
- ◆ Combination : Over 20 key combinations
- ◆ Accessory : Nut & cam (Various specs cams available upon specification). The end barrel with nut fitting
(OptionI accessory) Interchangeable Core
(OptionI accessory) Plastic dummy core
- ◆ Feature / Strength :
 1. Interchangeable Core
 2. Optional plastic dummy core for shipping purpose to prevent key code combinations from being duplicated
 3. Master key system is available per request
 4. Easy operate change-core to save your labor & whole lock cost when need to replace a new lock

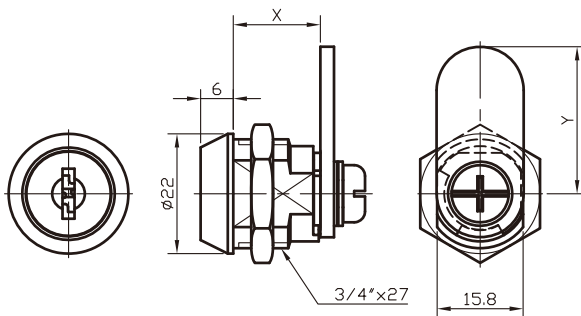
[illegible]








103403

Flat Key Wafer Cam Lock



- ◆ Main Material : Zinc alloy housing & barrel
- ◆ Finish : Bright Chrome/Nickel plated
- ◆ Application : Metal/Non-Metal Cabinet, Cupboard, Drawer, Locker, Tool box, Cash box, Lightbox billboard, Mail box, Public pay phone, Subway gate, Gun safe, Safe box, Security chest, Amusement machine, Vending machine, ATM machine, Kiosk, Coin Operated Machine, etc
- ◆ Combination : Over 150 key combinations
- ◆ Accessory : Nut & cam (Various specs cams available upon specification) The end barrel with screw fitting
- ◆ Feature / Strength :
 1. Double-sided keyway
 2. Master key system is available per request



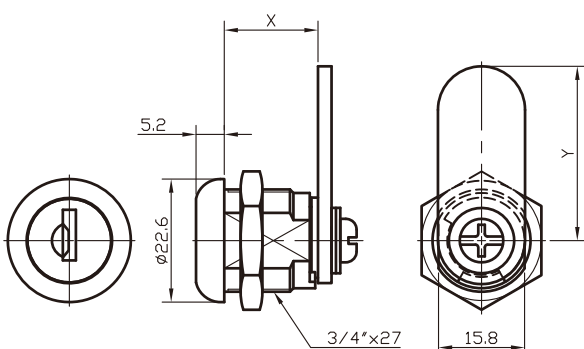
Item No.	Key Rotated Direction	X	Key Rotated Direction Fig	Y		
10340312	A	16	↑ Key Pull ↑ Rotation ↘ Direction	Various Sizes & Per customer request		
10340322	B or C					
10340313	A	22		  	Installation Hole	
10340323	B or C					
10340314	A	29	  			
10340324	B or C					

103404

Flat Key Wafer Cam Lock (Dust Proof)



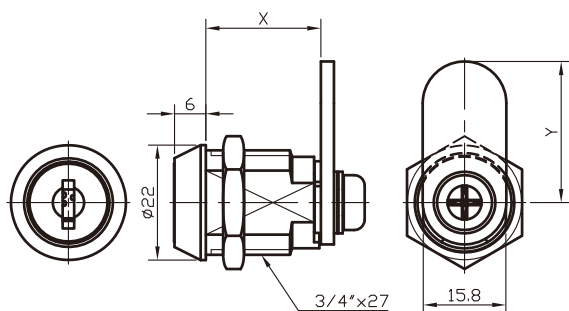
- ◆ Main Material : Zinc alloy housing & barrel
- ◆ Finish : Bright Chrome/Nickel plated
- ◆ Application : Metal/Non-Metal Cabinet, Cupboard, Drawer, Locker, Tool box, Cash box, Lightbox billboard, Mail box, Public pay phone, Subway gate, Gun safe, Safe box, Security chest, Amusement machine, Vending machine, ATM machine, Kiosk, Coin Operated Machine, etc
- ◆ Combination : Over 150 key combinations
- ◆ Accessory : Nut & cam (Various specs cams available upon specification). The end barrel with screw fitting
- ◆ Feature / Strength :
 1. Lock head added with Stainless Steel cap and anti-dust shutter
 2. Master key system is available per request



Item No.	Key Rotated Direction	X	Key Rotated Direction Fig	Y
10340412	A	17.2	↑ Key Pull ↓ Rotation ↘ Direction	Various Sizes & Per customer request Installation Hole
10340422	B or C			
10340432	D			

103409

Interchangeable Core - Flat Key Cam Lock

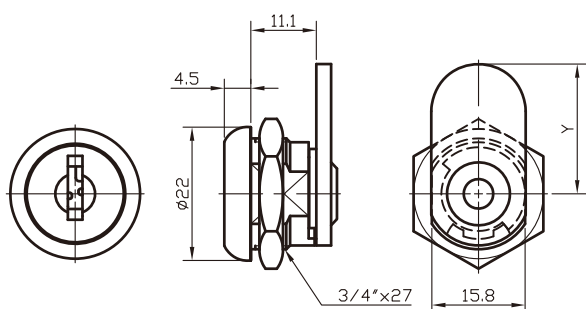


- ◆ Main Material : Zinc alloy housing & barrel
- ◆ Finish : Bright Chrome/Nickel plated
- ◆ Application : Typical applications for the range include metal/wooden cabinets, boxes, lockers which used for office buildings, Universities, Apartments, Perimeter, Doors, Schools and Hospitals
- ◆ Combination : Over 800 key combinations
- ◆ Accessory : Nut & cam (Various specs cams available upon specification). The end barrel with screw fitting
- ◆ Feature / Strength :
 1. Interchangeable Core
 2. Master key system is available per request
 3. Easy operate change-core to save your labor & whole lock cost when need to replace a new lock

Item No.	Key Rotated Direction	X	Key Rotated Direction Fig	Y
10340913	A	22	 A	Various Sizes & Per customer request Installation Hole

103496

Flat Key Wafer Cam Lock



- ◆ Main Material : Zinc alloy housing & barrel
- ◆ Finish : Bright Chrome/Nickel plated
- ◆ Application : Metal/Non-Metal Cabinet, Cupboard, Drawer, Locker, Tool box, Cash box, Lightbox billboard, Mail box, Public pay phone, Subway gate, Gun safe, Safe box, Security chest, Amusement machine, Vending machine, ATM machine, Kiosk, Coin Operated Machine, etc
- ◆ Combination : Over 100 key combinations
- ◆ Accessory : Nut & clip or cam. Cam prefixed

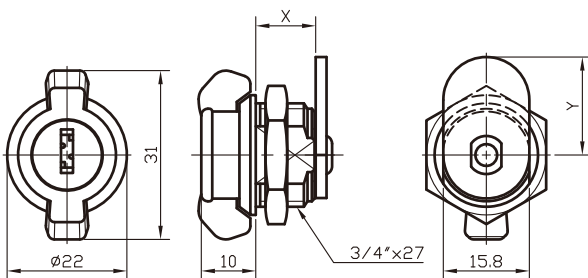
Item No.	Key Rotated Direction	Key Rotated Direction Fig	Y
10349610	A	 A	Various Sizes & Per customer request Installation Hole
10349620	B		

103716

Flat Key Wafer Cam Lock (Wing Latch)



- ◆ Main Material : Zinc alloy housing & barrel
- ◆ Finish : Bright Chrome/Black E-coating
- ◆ Application : Metal/Wooden Cabinets, Server cabinet, Industrial Computer, Locker, Tool box, Machine and Equipment, etc
- ◆ Combination : over 10 combinations
- ◆ Accessory : Nut & cam, Cam prefixed



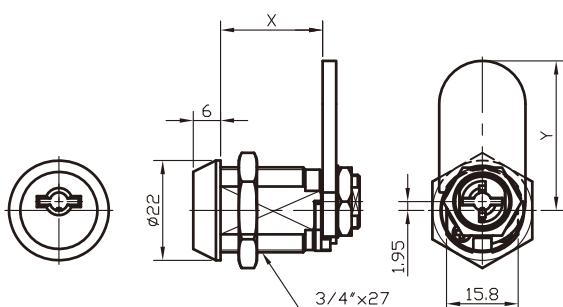
Item No.	Key Rotated Direction	X	Key Rotated Direction Fig	Y
10371620	A	11		Various Sizes & Per customer request Installation Hole

104411

High Security Flat Key Pin Tumbler Lock



- ◆ Main Material : Brass or Zinc alloy housing & barrel
- ◆ Finish : Bright Chrome/Nickel plated
- ◆ Application : Metal/Non-Metal Cabinet, Cupboard, Locker, Tool box, Cash box, Lightbox billboard, Mail box, Public pay phone, Subway gate, Gun safe, Safe box, Security chest, Amusement machine, Vending machine, ATM machine, Kiosk, Coin Operated Machine, Parking meter, Access door, etc
- ◆ Combination : Over 50,000 combinations
- ◆ Accessory : Nut & cam (Various specs cams available upon specification)
- ◆ Feature / Strength :
 1. High security cylinder system, with anti-picking, anti-drilling function as well as anti-jam of special keyway



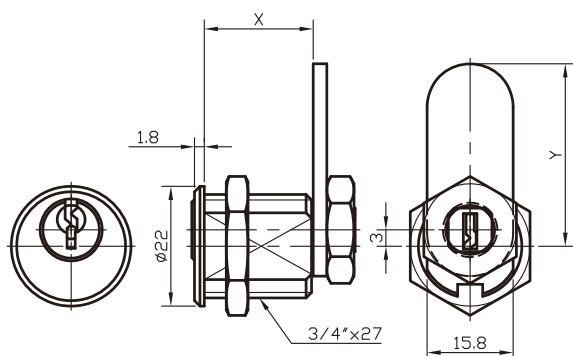
Item No.	Key Rotated Direction	X	Key Rotated Direction Fig	Y
10441113	A	22.5		Various Sizes & Per customer request Installation Hole

104800

Flat Key Pin - Tumbler Cam Lock



- ◆ Main Material : Zinc alloy housing & barrel
- ◆ Finish : Bright Chrome/Nickel plated
- ◆ Application : Metal/Non-Metal Wooden Door, Cabinet, Cupboard, Drawer, Locker, Tool box, Cash box, Lightbox billboard, Mail box, Public pay phone, Subway gate, Kiosk, Coin Operated Machine, etc
- ◆ Combination : Over 10 Key combinations
- ◆ Accessory : Nut & cam (Various specs cams available upon specification). The end barrel with nut fitting



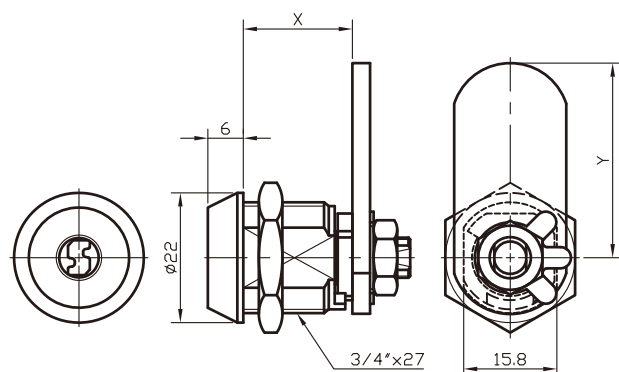
Item No.	Key Rotated Direction	X	Key Rotated Direction Fig	Y
10480010	A	20	 A	Various Sizes & Per customer request Installation Hole

108418

High Security Finland Lock



- ◆ Main Material : Zinc alloy or brass housing & zinc alloy barrel
- ◆ Finish : Bright Chrome/Nickel plated
- ◆ Application : Metal/Non-Metal Wooden Door, Cabinet, Vault/Safe, Cupboard, Drawer, Locker, Tool box, Cash box, Lightbox billboard, Mail box, Subway gate, Vending Machine, Amusement machine, Kiosk, Coin Operated Machine, etc
- ◆ Combination : Over 500 key combinations
- ◆ Accessory : Nut & cam (Various specs cams available upon specification). The end barrel with nut fitting
- ◆ Feature / Strength :
 1. Master key system is available per request

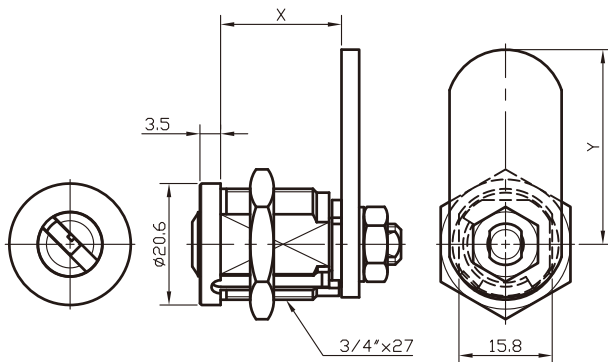


Item No.	Key Rotated Direction	X	Key Rotated Direction Fig	Y
10841812	A	18.5	 A	Various Sizes & Per customer request Installation Hole
10841813	A	23.5		

High Security Dimple Key Lock



- ◆ Main Material : Brass or zinc alloy housing & zinc alloy Barrel
- ◆ Finish : Bright Chrome/Nickel plated
- ◆ Application : Metal/Non-Metal Wooden Door, Cabinet, Vault/Safe, Cupboard, Drawer, Locker, Tool box, Cash box, Lightbox billboard, Mail box, Subway gate, ATM, Vending Machine, Amusement machine, Kiosk, Coin Operated Machine, etc
- ◆ Combination : Over 10,000 key combinations
- ◆ Accessory : Nut & cam (Various specs cams available upon specification). The end barrel with nut fitting
- Optional accessory : Security metal collar

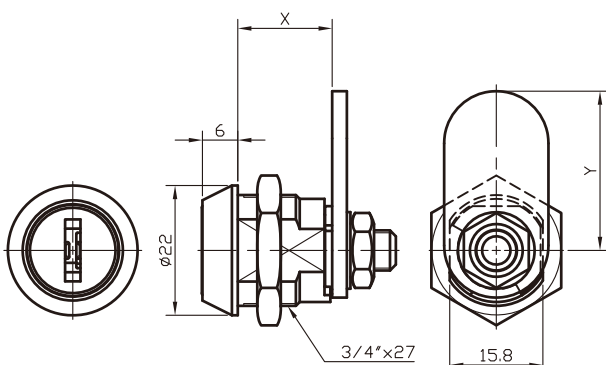
[illegible]


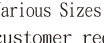

High Security Internal Wave Key Lock

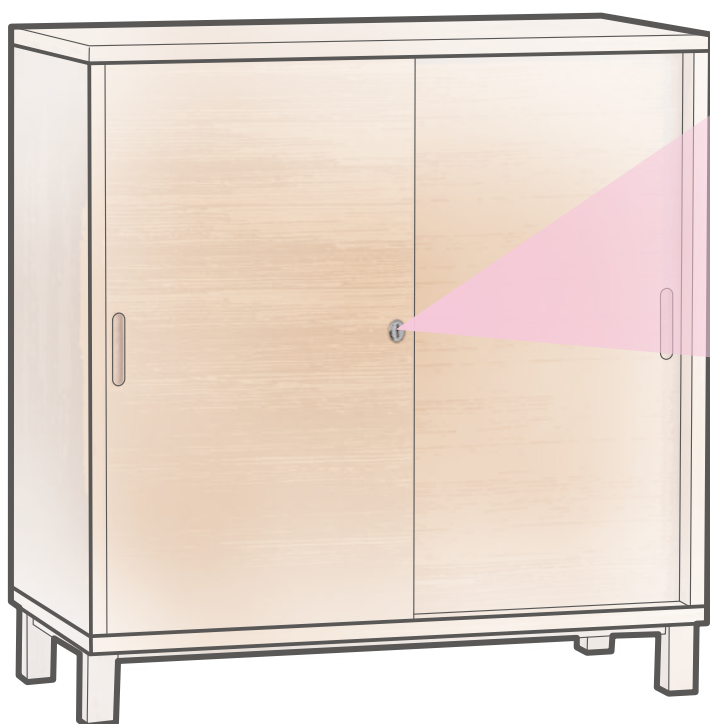


- ◆ Main Material : Zinc alloy housing & barrel
- ◆ Finish : Bright Chrome/Nickel plated
- ◆ Application : Metal/Non-Metal Cabinet, Cupboard, Drawer, Locker, Tool box, Cash box, Lightbox billboard, Mail box, Public pay phone, Subway gate, Gun safe, Safe box, Security chest, Amusement machine, Vending machine, ATM machine, Kiosk, Coin Operated Machine, etc
- ◆ Combination : Over 5,000 key combinations
- ◆ Accessory : Nut & cam (Various specs cams available upon specification). The end barrel with nut fitting
- ◆ Feature / Strength :

- ◆ Feature / Strength :
 1. High security, more combination codes changeable than traditional wafer locks
 2. Unique keyway, not duplicable from public
 3. Master key system is available per request

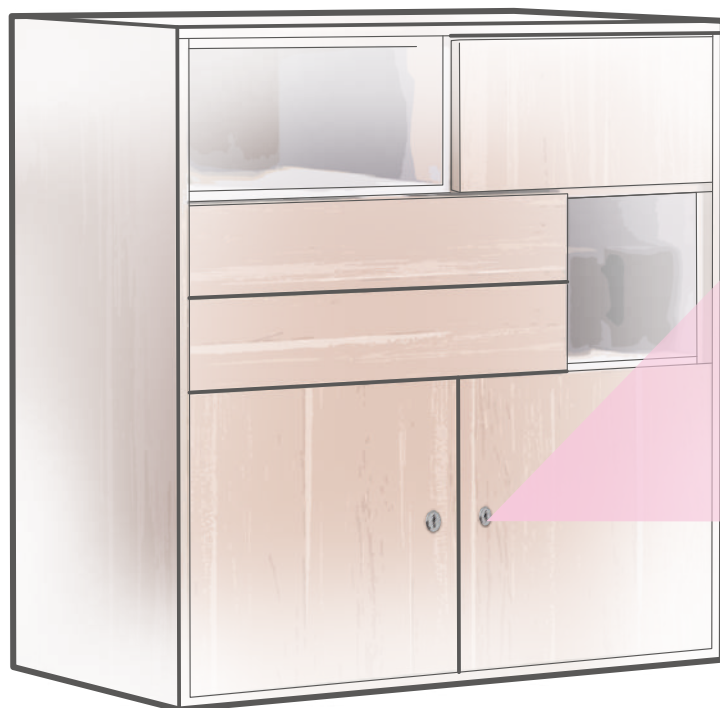


Item No.	Key Rotated Direction	X	Key Rotated Direction Fig	Y
11040312	A	16	 <p>↑ Key Pull ↑ Rotation ↘ Direction</p>	Various Sizes & Per customer request Installation Hole 
11040322	B or C			
11040313	A	22		
11040323	B or C			
11040314	A	29	 <p>A B C</p>	
11040324	B or C			

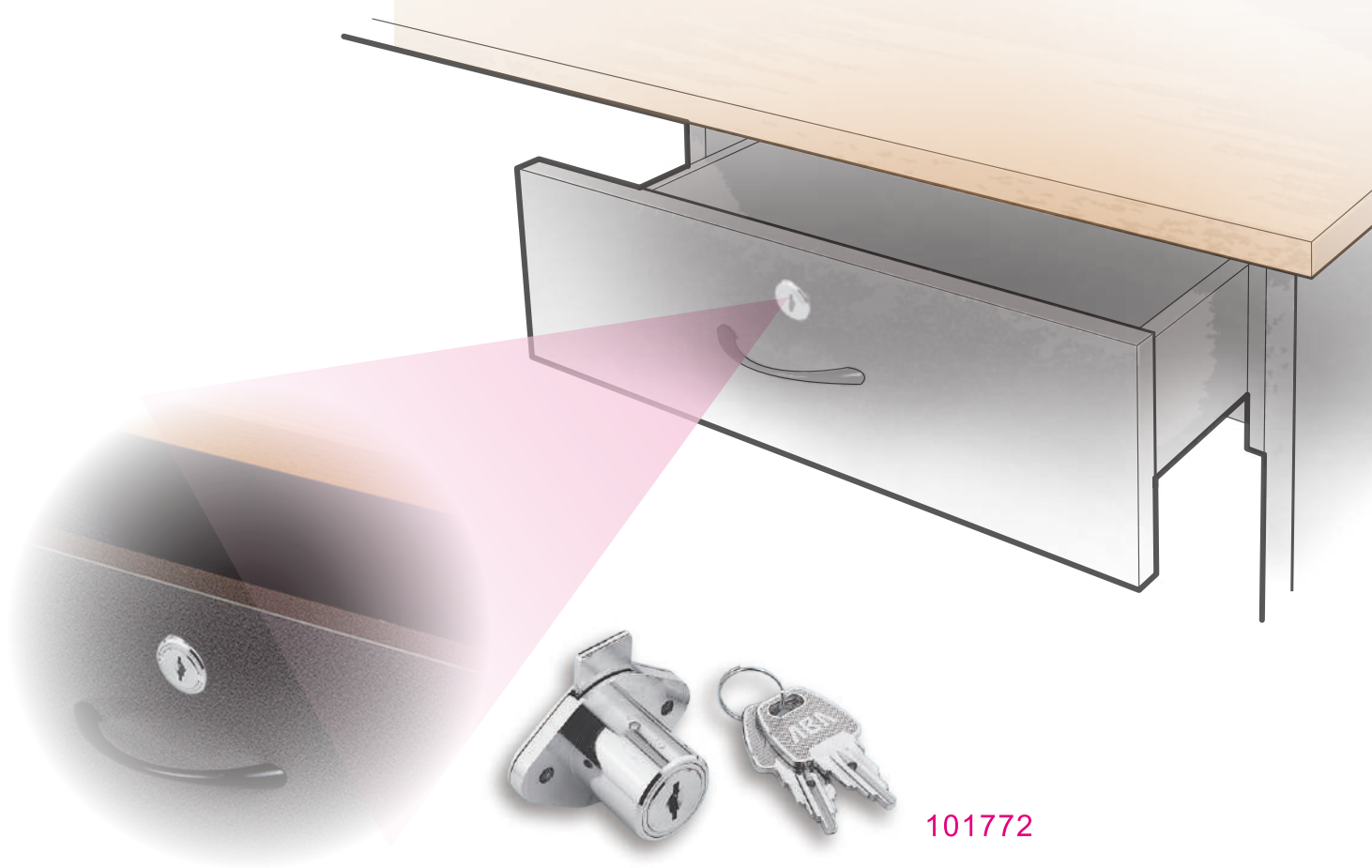


101774

Furniture Lock



101775



101772



103777

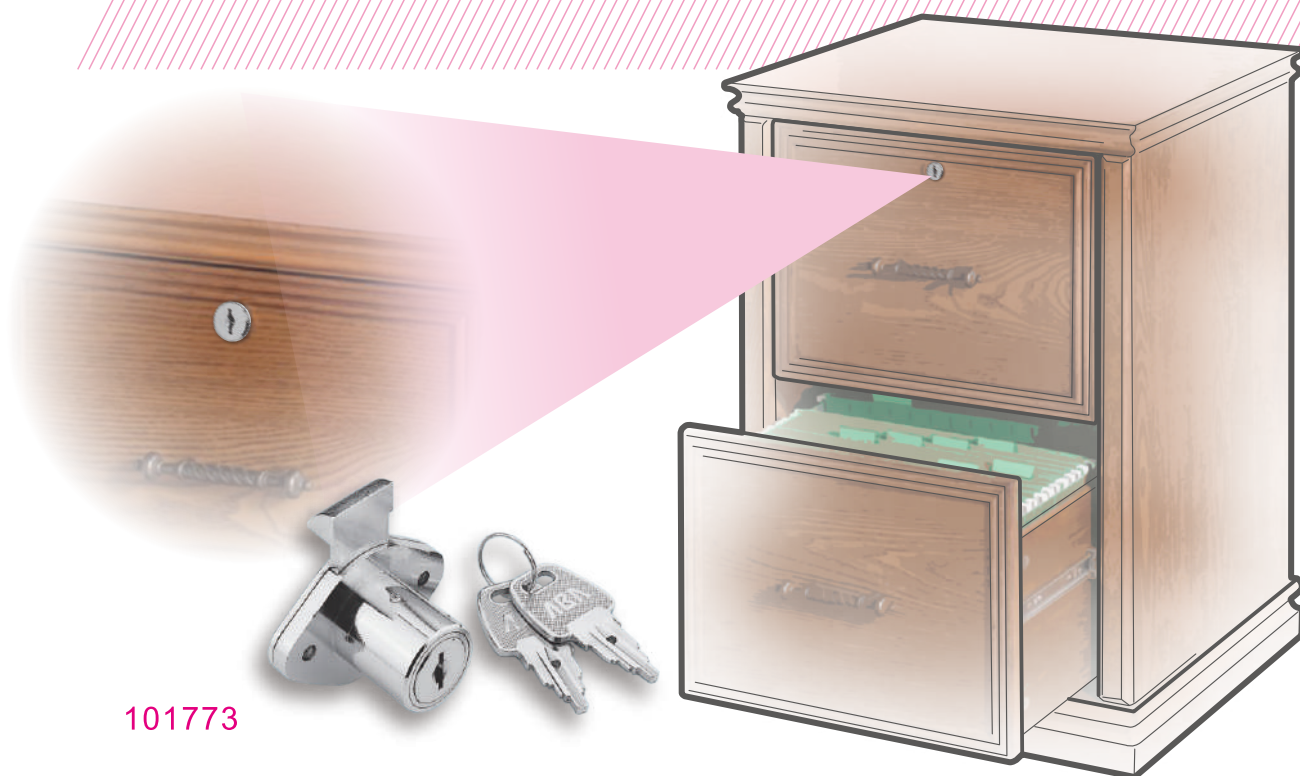


103779



103780

Office Automation / Furniture



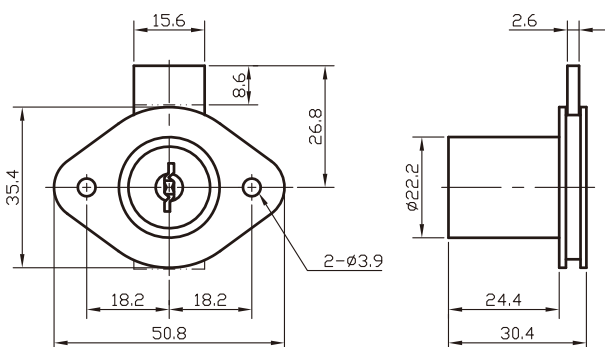
101773


101772 / 103777

Furniture Lock With Pagoda Cylinder / Wafer Cylinder



- ◆ Main Material : Zinc alloy housing & barrel
- ◆ Finish : Nickel plated
- ◆ Application : Roll top desks / Desks, Drawers, Plan cabinets, Executive filing cabinets, Steel cabinets, Cupboards, Boxes, Chests, Bureaux, Wardrobes, Jewel and watch display cases
- ◆ Combination : Over 150 key combinations
- ◆ Feature / Strength :
 1. Master key system is available per request
 2. Lock barrel installed with 2 hardened steel anti-drill pins to prevent drill attempt
 3. Top security patented PAGODA system, with anti-picking function



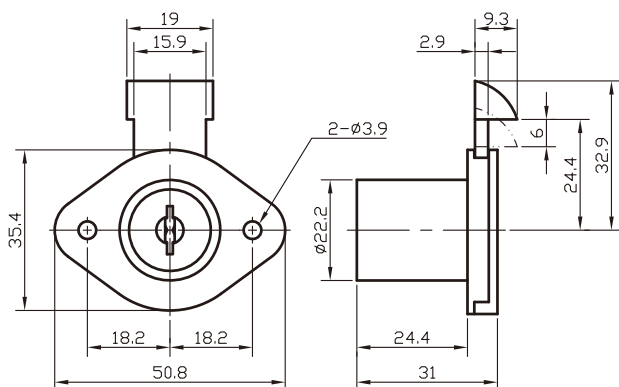
Item No.	Key Rotated Direction		Key Rotated Direction Fig	Installation Hole
10177220	A		↑ Key Pull ↓ Rotation ↘ Direction	 <p style="text-align: center;">ø22.4</p>
10377720	A			

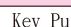

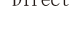
101773 / 103778

Furniture Lock With Pagoda Cylinder / Wafer Cylinder



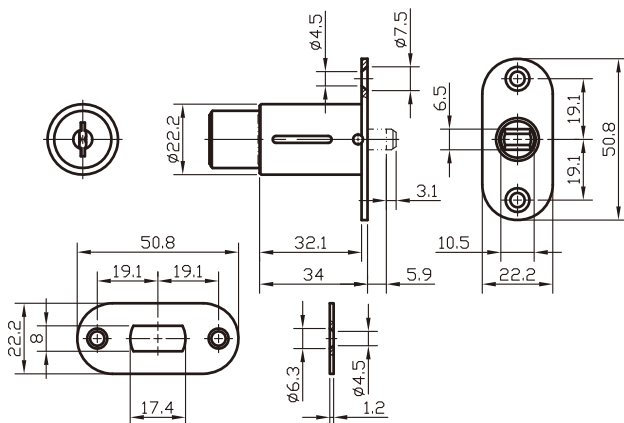
- ◆ Main Material : Zinc alloy housing & barrel
- ◆ Finish : Nickel plated
- ◆ Application : Roll top desks / Desks, Drawers, Plan cabinets, Executive filing cabinets, Steel cabinets, Cupboards, Boxes, Chests, Bureaux, Wardrobes, Jewel and watch display cases
- ◆ Combination : Over 150 key combinations
- ◆ Feature / Strength :
 1. Master key system is available per request
 2. Lock barrel installed with 2 hardened steel anti-drill pins to prevent drill attempt
 3. Top security patented PAGODA system, with anti-picking function



Item No.	Key Rotated Direction	Key Rotated Direction Fig	Installation Hole
10177310	A		
10377810	A	 <p>A</p>	

101774 / 103779

Furniture Lock With Pagoda Cylinder / Wafer Cylinder

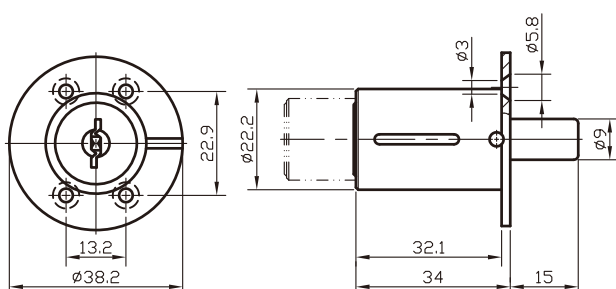


- ◆ Main Material : Zinc alloy housing & barrel
- ◆ Finish : Nickel plated
- ◆ Application : Roll top desks / Desks, Drawers, Plan cabinets, Executive filing cabinets, Steel cabinets, Cupboards, Boxes, Chests, Bureaux, Wardrobes, Jewel and watch display cases
- ◆ Combination : Over 150 key combinations
- ◆ Feature / Strength :
 1. Master key system is available per request.
 2. Lock barrel installed with 2 hardened steel anti-drill pins to prevent drill attempt
 3. Top security patented PAGODA system, with anti-picking function

Item No.	Key Rotated Direction	Key Rotated Direction Fig	Installation Hole
10177410	A	Key Pull Rotation Direction	
10377910	A		

101775 / 103780

Furniture Lock With Pagoda Cylinder / Wafer Cylinder



- ◆ Main Material : Zinc alloy housing & barrel
- ◆ Finish : Nickel plated
- ◆ Application : Roll top desks / Desks, Drawers, Plan cabinets, Executive filing cabinets, Steel cabinets, Cupboards, Boxes, Chests, Bureaux, Wardrobes, Jewel and watch display cases
- ◆ Combination : Over 150 key combinations
- ◆ Feature / Strength :
 1. Master key system is available per request.
 2. Lock barrel installed with 2 hardened steel anti-drill pins to prevent drill attempt
 3. Top security patented PAGODA system, with anti-picking function

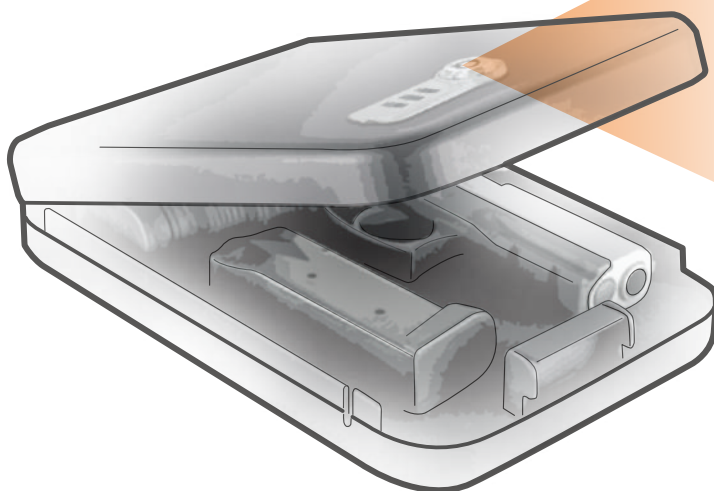
Item No.	Key Rotated Direction	Key Rotated Direction Fig	Installation Hole
10177510	A	Key Pull Rotation Direction	
10378010	A		



107804



107803



107440



107433



107850

Combination Lock

Cabinet • Security chest • Gun safe • Safety box

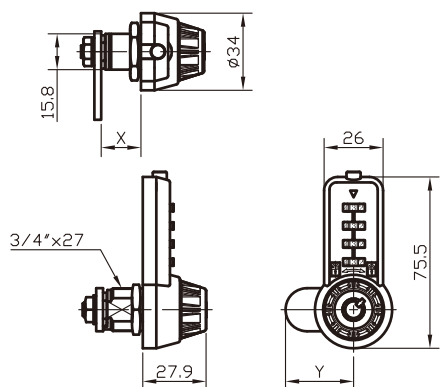


107450







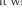


















107433

Smart Combination Cam Lock (4 Digits)

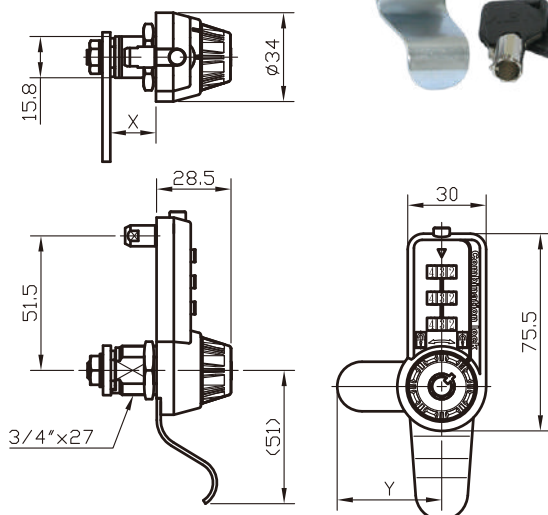


- ◆ Main Material : Zinc alloy housing & barrel
- ◆ Finish : Bright Chrome/Satin Chrome/Black E-coating
- ◆ Combination :
 1. Wheels combination codes: 10,000 combination codes changeable
 2. Key codes: over 1,000 key combination changeable
- ◆ Application : Safe/Safety box, Tool box, Security chest, Cash box, Recreational Vehicle, Medical cart, Kiosk, Gun safe, as well as locker applications, cabinets, drawers, storage, etc. - anywhere needing flexibility of combination retrieval or multiple person access
- ◆ Feature / Strength :
 1. Heavy duty metal construction, with high security ABACO system
 2. Master Key or Grand Master Key system available
 3. Dual access - keys and combination with easy to read dials and open and close.
 4. The dual access lock with key override is user friendly - turn knob to open with no bulky housing to twist defacing surfaces
 5. Ability to install horizontally and vertically
 6. With code retrievable function, you can use the key to recall your forgotten codes











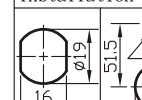
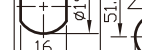
Item No.	 Rotated Direction	X	 Rotated Direction Fig	Y
10743302	A or B or C	17.5	 Combination code COULD be reset Digit wheels COULD be adjusted	Various Sizes & Per customer request Installation Hole
10743303	A or B or C	22.5	 Combination code COULD NOT be reset Digit wheels could NOT be adjusted	
10743304	A or B or C	29	 Combination code COULD be reset Digit wheels COULD be adjusted	
Key Rotated Direction Fig			 Direction  A  B  C	
 Key Pull  Rotation  Direction	 or 			
			 Direction  A  B  C	 2-ø4.3  16  19  29 or  ø29

107440

Smart Combination Cam Lock (3 Digits)



- ◆ Main Material : Zinc alloy housing & barrel
- ◆ Finish : Bright Chrome/Satin Chrome/Black E-coating
- ◆ Combination :
 1. Wheels combination codes: 1,000 combination codes changeable
 2. Key codes: over 1,000 key combination changeable
- ◆ Application : Safe/Safety box, Tool box, Security chest, Cash box, Recreational Vehicle, Medical cart, Kiosk, Gun safe, as well as locker applications, cabinets, drawers, storage, etc. - anywhere needing flexibility of combination retrieval or multiple person access
- ◆ Feature / Strength :
 1. Heavy duty metal construction, with high security ABACO system
 2. Master Key or Grand Master Key system available
 3. Dual access - keys and combination with easy to read dials and open and close.
 4. The dual access lock with key override is user friendly - turn knob to open with no bulky housing to twist defacing surfaces
 5. Ability to install horizontally and vertically
 6. With code retrievable function, you can use the key to recall your forgotten codes

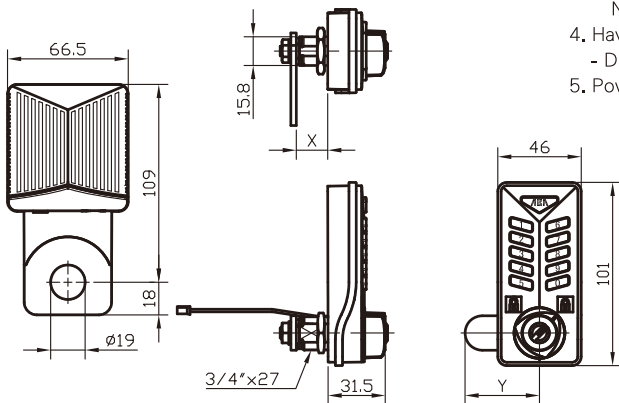
Item No.	 Rotated Direction	X	 Rotated Direction Fig	Y
10744002	A	17.5	 Combination code COULD be reset Digit wheels COULD be adjusted	Various Sizes & Per customer request Installation Hole
10744003	A	22.5	 Combination code could NOT be reset Digit wheels could NOT be adjusted	
10744004	A	29	 Combination code COULD be reset Digit wheels COULD be adjusted	
Key Rotated Direction Fig				
 Key Pull  Rotation  Direction			 A	 or 

107450

Digital Cam Lock / Electronic Cabinet Lock



- ◆ Main Material : Zinc alloy housing & barrel & Lock Body
- ◆ Finish : Black E-coating
- ◆ Application : Safe/Safety box, Tool box, Security chest, Cash box, Recreational Vehicle, Medical cart, Kiosk, Gun safe, as well as locker applications, cabinets, drawers, storage, etc. - anywhere needing flexibility of combination retrieval or multiple person access
- ◆ Feature / Strength :
 1. It can be set four to ten of passwords
 2. Private code (for office or organization using)
 - User code can be set to six groups
 - User code retained when the lock opened
 - With automatic locking function
 3. Public code (for multiple person access -- locker applications)
 - One-time use user code. Use code lost when the lock opened.
 - Need to set the user code again for next time using
 4. Have a warning tone (switchable)
 - Digit buttons with LED light
 5. Power: DC 6V, Use AA/1.5V Battery * 4 pcs



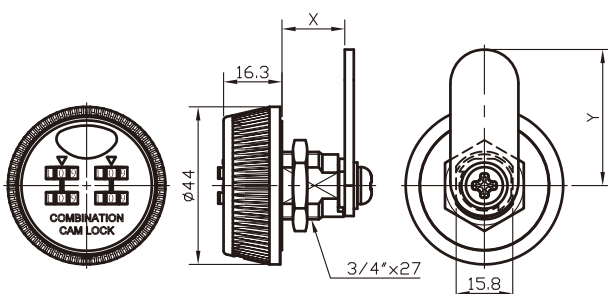
Item No.	Key Rotated Direction	X	Key Rotated Direction Fig	Y
10745002	A	17.5	↑ Key Pull	Various Sizes & Per customer request Installation Hole
10745003	A	22.5	↑ Rotation	
10745004	A	29	↘ Direction	

107803

Combination Cam Lock (4 Digits)



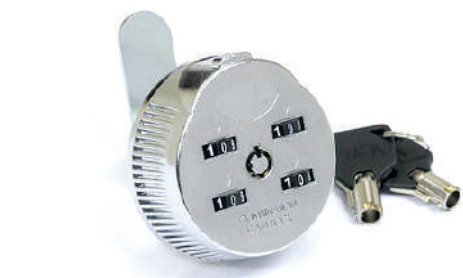
- ◆ Main Material : Zinc alloy housing, barrel, revolver
- ◆ Finish : Bright Chrome/Black E-coating
- ◆ Combination : 10,000 combination codes changeable
- ◆ Application : Safe/Safety box, Tool box, Security chest, Cash box, Recreational Vehicle, Medical cart, Kiosk, Gun safe, as well as locker applications, cabinets, drawers, storage, etc
- ◆ Feature / Strength :
 1. easy to install
 2. can be programmed in a non-resettable mode
 3. can replace any standard cam lock
 4. Heavy duty metal construction, with 4 pick-proof chrome plated dials and constructed out of sturdy zinc alloy the lock won't rust or wear out over time



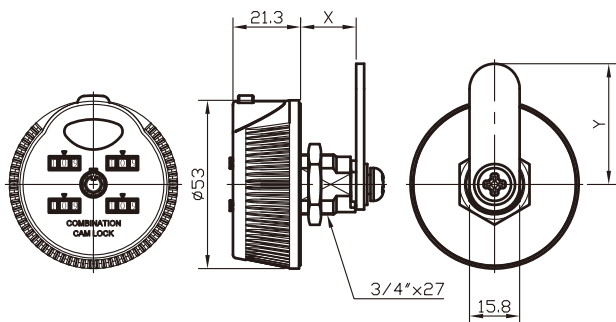
Item No.	▽ Rotated Direction	X	▽ Rotated Direction Fig	Y
10780302	A	17.5	↑ Combination code COULD be reset Digit wheels COULD be adjusted	Various Sizes & Per customer request Installation Hole
10780303	A	22.5	↑ Combination code could NOT be reset Digit wheels could NOT be adjusted	
10780304	A	29	↘ Combination code COULD be reset Digit wheels COULD be adjusted	
			↘ Direction	

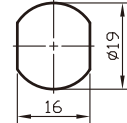

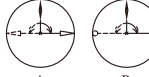
107804

Smart Combination Cam Lock (4 Digits)



- ◆ Main Material : Zinc alloy housing & barrel
- ◆ Finish : Bright Chrome/black E-coating
- ◆ Application : Safe/Safety box, Tool box, Security chest, Cash box, Recreational Vehicle, Medical cart, Kiosk, Gun safe, as well as locker applications, cabinets, drawers, storage, etc. - anywhere needing flexibility of combination retrieval or multiple person access
- ◆ Combination :
 1. Wheels combination codes: 10,000 combination codes changeable
 2. Key codes: over 1,000 key combination changeable
- ◆ Feature / Strength :
 1. Heavy duty metal construction
 2. Master Key or Grand Master Key system available
 3. Dual access - keys and combination with easy to read dials and open and close
 4. The dual access lock with key override is user friendly - turn knob to open with no bulky housing to twist defacing surfaces
 5. With code retrievable function, you can use the key to recall your forgotten codes



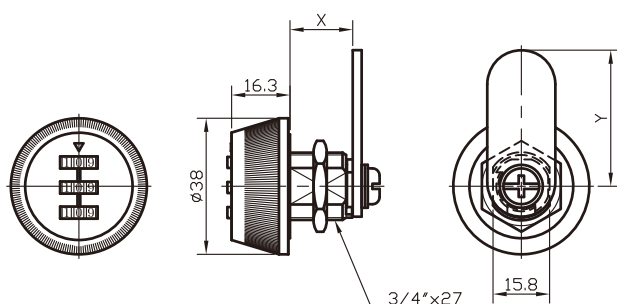
Item No.	▽ Rotated Direction	X	▽ Rotated Direction Fig	Y
10780402	A or B	17.5	⬆ Combination code COULD be reset Digit wheels COULD be adjusted	Various Sizes & Per customer request Installation Hole 
10780403	A or B	22.5	↗ Combination code could NOT be reset Digit wheels could NOT be adjusted	
10780404	A or B	29	⬆ Combination code COULD be reset Digit wheels COULD be adjusted	
Key Rotated Direction Fig				
<div>⬆ Key Pull</div> <div>↗ Rotation</div> <div>↘ Direction</div> <div></div>			<div>↘ Direction</div> <div></div> <div>A B</div>	

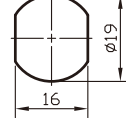
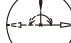

107850

Combination Cam Lock (3 Digits)



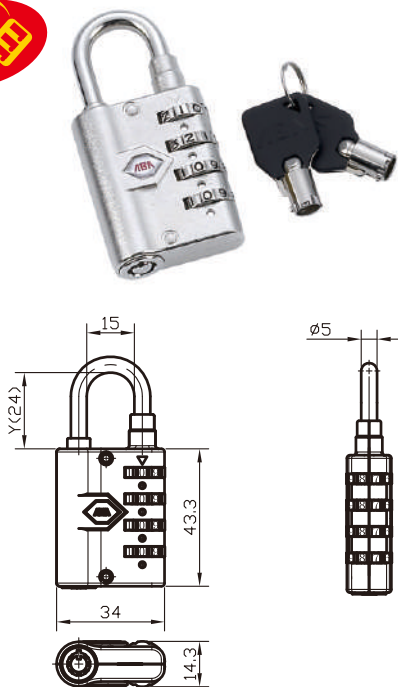
- ◆ Main Material : Zinc alloy housing & barrel
- ◆ Finish : Bright Chrome/Black E-Coating
- ◆ Application : Safe/Safety box, Tool box, Security chest, Cash box, Recreational Vehicle, Medical cart, Kiosk, Gun safe, as well as locker applications, cabinets, drawers, storage, etc
- ◆ Combination : 1,000 combination codes changeable
- ◆ Feature / Strength :
 1. Can replace any standard cam lock
 2. Both resettable & non-resettable modes
 3. Keyless convenience--set your own code any time
 4. Multiple sizes available
 5. Durability and reliability





Item No.	▽ Rotated Direction	X	▽ Rotated Direction Fig	Y
10785002	A or B	17.5	↑ Combination code COULD be reset Digit wheels COULD be adjusted	Various Sizes & Per customer request Installation Hole 
10785003	A or B	22.5	↗ Combination code could NOT be reset Digit wheels could NOT be adjusted	
10785004	A or B	29	↘ Combination code COULD be reset Digit wheels COULD be adjusted	
			↖ Direction 	
				
			A B	

107918

Smart Combination Padlock (4 Digits)

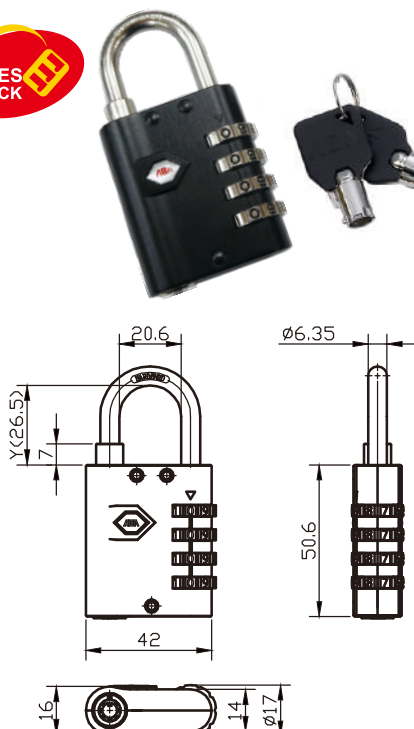


- ◆ Main Material : Zinc alloy lock body, housing & barrel
- ◆ Finish : Bright Chrome/Black E-coating
- ◆ Application : Storage door, storage gate, equipment case, tool box, locker, luggage, cabinets, suitcase, jewel box, bike, trailer, motorcycle, bag, cash box, window, etc
- ◆ Combination :
 1. Wheels combination codes: 10,000 combination codes changeable
 2. Key codes: over 10,000 key combination changeable
- ◆ Feature / Strength :
 1. Set-your-own combination convenience
 2. Shackle diameter 5mm. Shackle material or height could be changed by request
 3. Resettable to allow for a personalized combination
 4. Safe enough for light duty use
 5. Unlock by either combination or key
 6. With code retrievable function
 7. Master Key or Grand Master Key system available

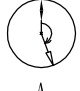

Item No.	Key Rotated Direction	Key Rotated Direction Fig	Y
10791800	A	↑ Key Pull ↓ Rotation ↘ Direction  A	Various Sizes & Per customer request Installation Hole  $>\phi 5.2$

107921

Smart Combination Padlock (4 Digits)

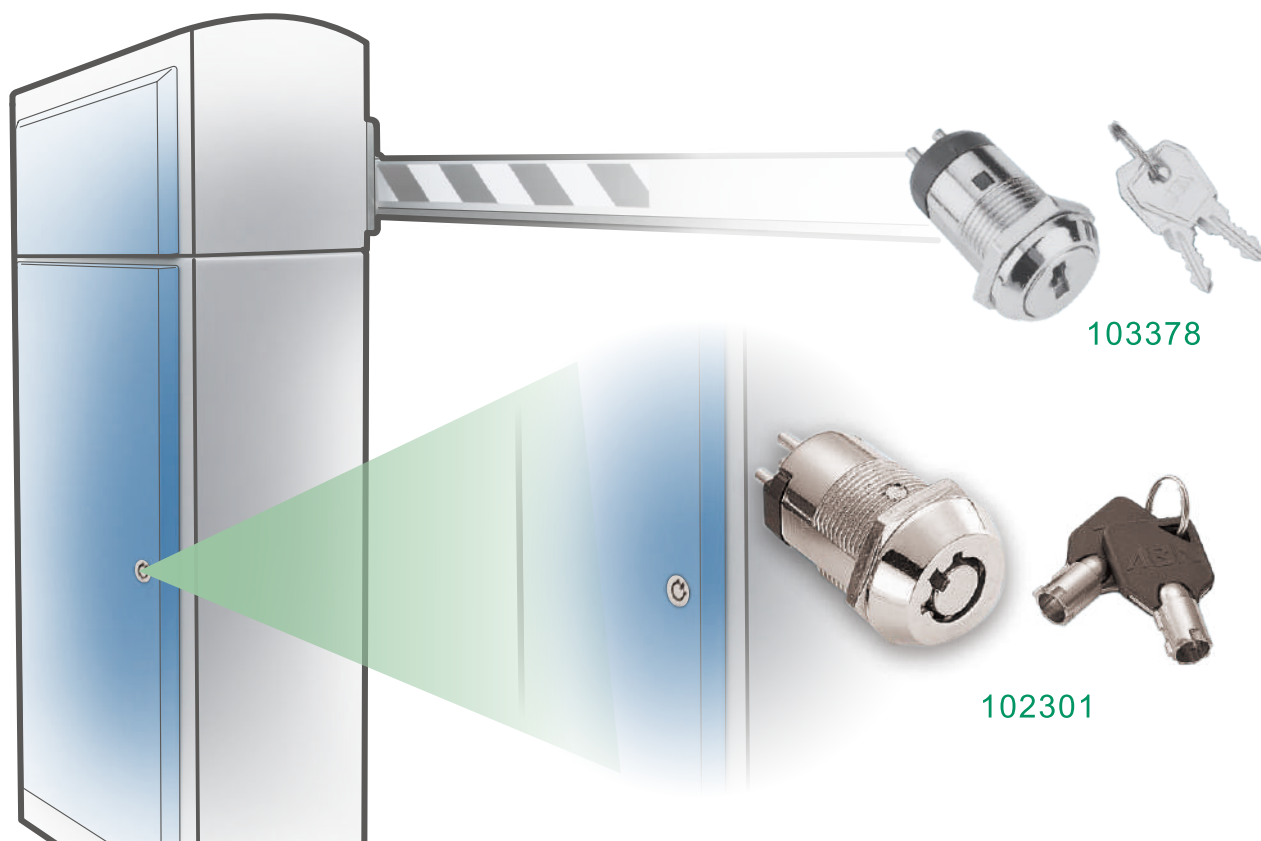


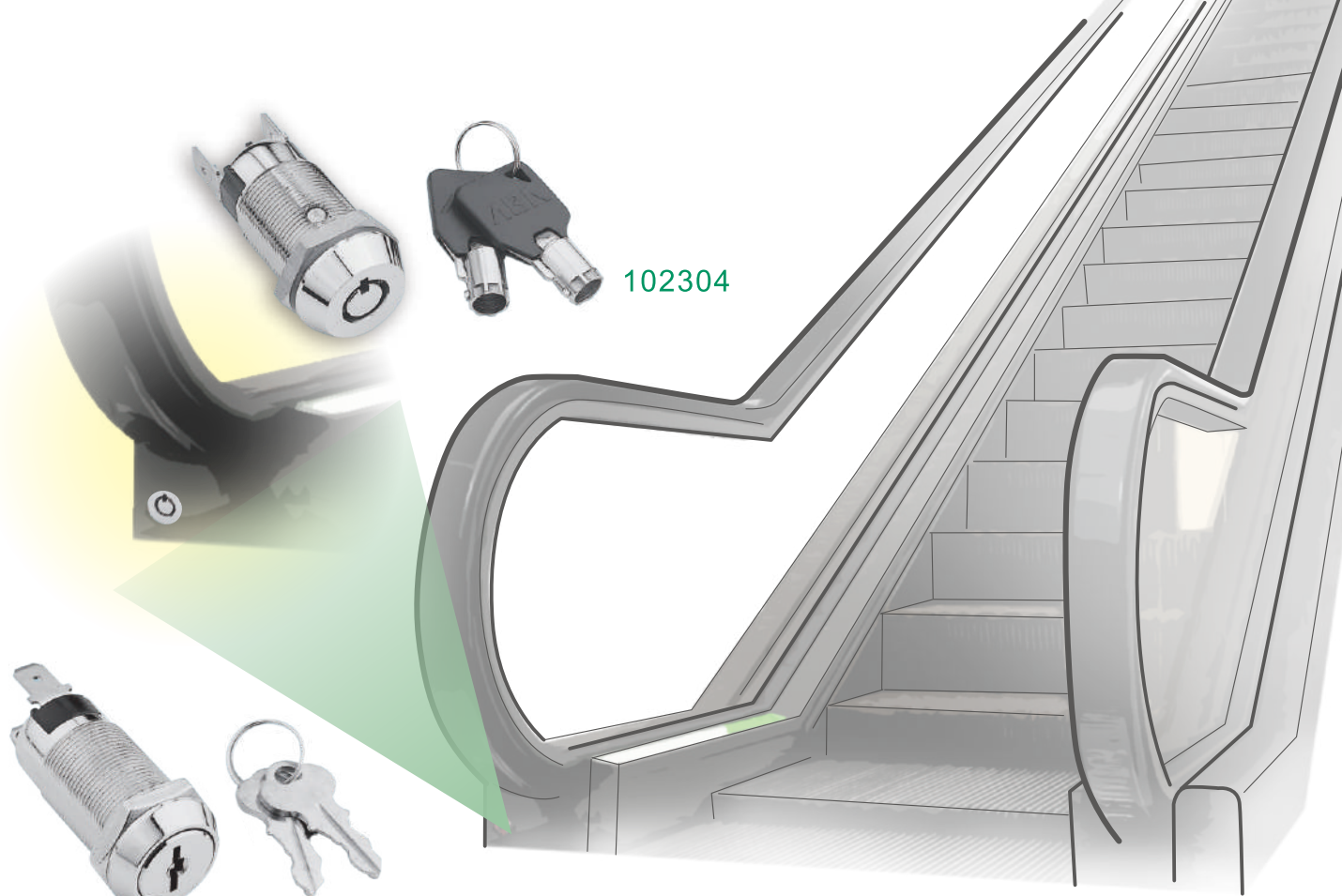
- ◆ Main Material : Zinc alloy lock body, housing & barrel
- ◆ Finish : Nickel plating / Black E-coating
- ◆ Application : Storage door, equipment case, tool box, locker, luggage, cabinets, suitcase, jewel box, bike, trailer, motorcycle, cash box, window, etc
- ◆ Combination :
 1. Wheels combination codes: 10,000 combination codes changeable
 2. Key codes: over 10,000 key combination changeable
- ◆ Feature / Strength :
 1. Set-your-own combination convenience
 2. Shackle diameter up to 6.35mm. Shackle material or height could be changed by request
 3. Resettable to allow for a personalized combination
 4. Safe enough for various devices
 5. Unlock by either combination or key
 6. With code retrievable function, you can use the key to recall your forgotten codes
 7. Master Key or Grand Master Key system available
 8. Stronger design and easier to find out your forgotten codes

Item No.	Key Rotated Direction	Key Rotated Direction Fig	Y
10792100	A	↑ Key Pull ↓ Rotation ↘ Direction  A	Various Sizes & Per customer request Installation Hole  $>\phi 6.5$



Switch Lock

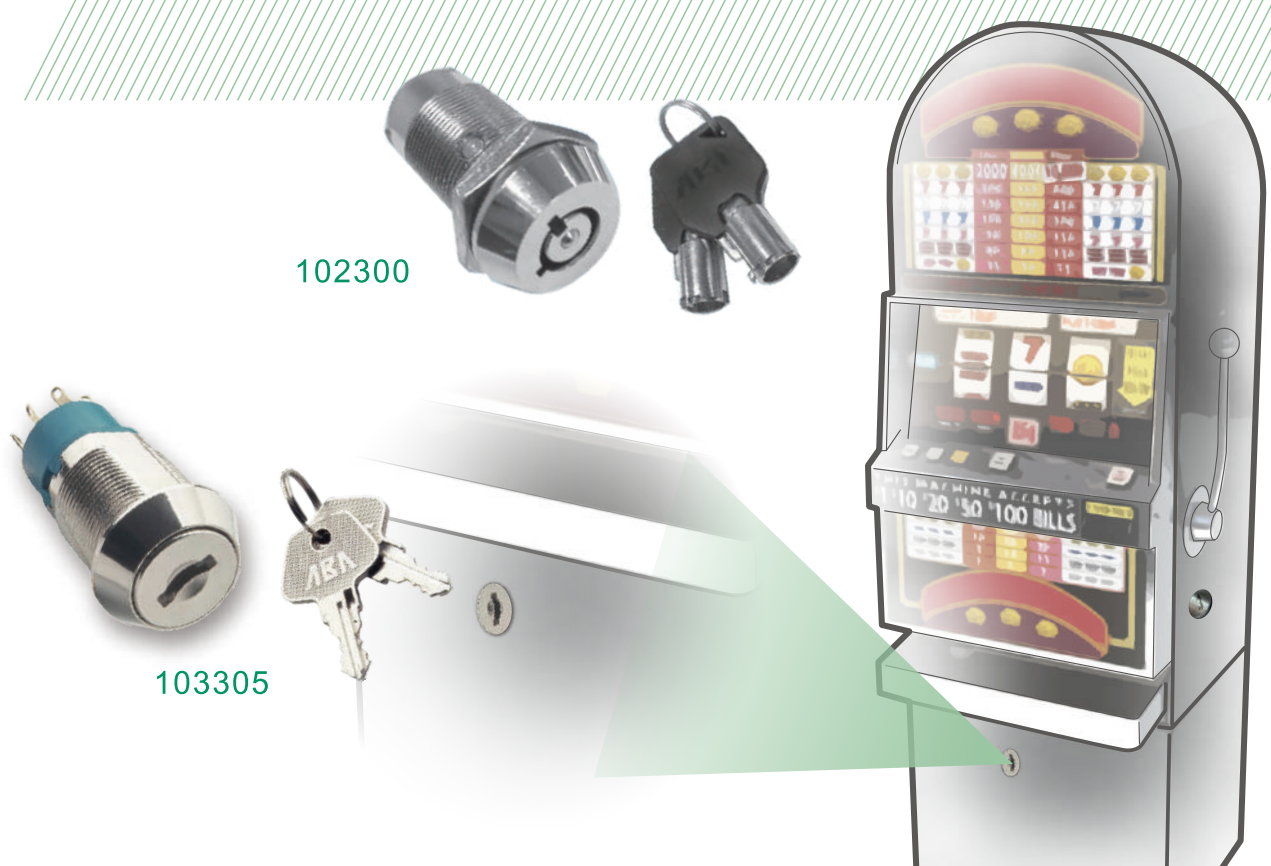




102304

103302

Elevato • Parking Device • Gaming



102300

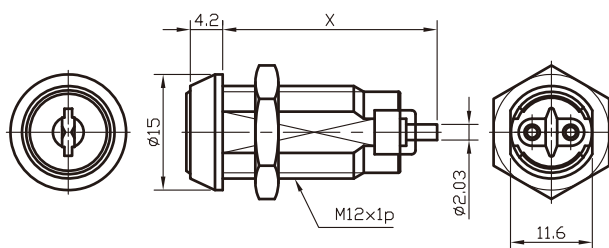
103305

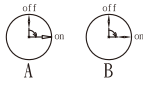
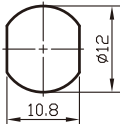
101130

High Security Pagoda Key Switch Lock (Miniature)



- ◆ Main Material : Zinc alloy housing & barrel
- ◆ Finish : Chrome plated. Contact & terminal with silver plated.
- ◆ Application : Security system, Alarm system, Computer case & Payphone, Control panels, Electrical equipment, Electronic instrument, Industry computer, Control boxes, Elevator and Escalator, Switch gear box, Bicycle, etc
- ◆ Combination : Over 500 key combinations
- ◆ Electric parameter :
Current Rating: 2A 125VAC, 1A 250VAC
Contact Resistance: 10 Milli-Ohms Max
Insulation Resistance: 500 Meg-Ohms Min
Dielectric Strength: 1000VAC 1 minute
- ◆ Feature / Strength :
 1. Anti-vibration function is available
 2. Master key system is available per request
 3. Lock barrel installed with 2 hardened steel anti-drill pins to prevent drill attempt
 4. Top security patented PAGODA system, with anti-picking function



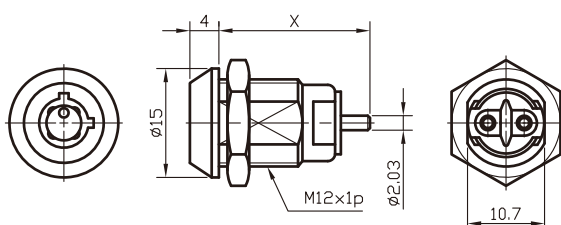
Item No.	Key Rotated Direction	X	Key Rotated Direction Fig	Installation Hole
10113010	A	27.8	Key Pull Rotation \ Direction 	
10113020	B			

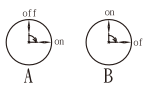
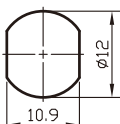
102120

Security Tubular Key Switch Lock (Miniature)



- ◆ Main Material : Zinc alloy housing & barrel
- ◆ Finish : Chrome plated. Contact & terminal with silver plated
- ◆ Application : Security system, Alarm system, Computer case & Payphone, Control panels, Electrical equipment, Electronic instrument, Industry computer, Control boxes, Elevator and Escalator, Switch gear box, etc
- ◆ Combination : Key alike
- ◆ Electric parameter :
Current Rating: 2A 125VAC, 1A 250VAC
Contact Resistance: 10 Milli-Ohms Max
Insulation Resistance: 500 Meg-Ohms Min
Dielectric Strength: 1000VAC 1 minute
- ◆ Feature / Strength :
 1. Different switch on position is available per request



Item No.	Key Rotated Direction	X	Key Rotated Direction Fig	Installation Hole
10212022	A or B	16	Key Pull Rotation \ Direction 	
10212024	A or B	20.8		

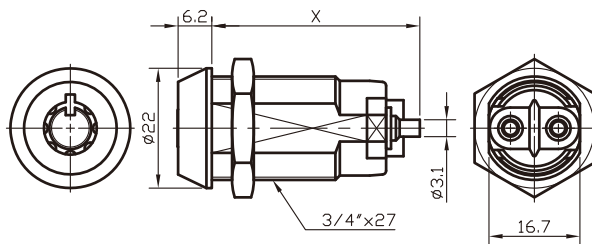
102300

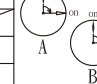
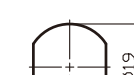
Security Tubular Key Switch Lock



- ◆ Main Material : Brass or Zinc alloy housing & barrel
- ◆ Finish : Chrome plated. Contact & terminal with silver plated
- ◆ Application : Alarm system, Computer case, Charging meter, Security system, Electrical equipment, Electronic instrument, Garage Doors, Elevator and Escalator, Gaming & Slot machine, Vending machine, Control system, Control panels, Control boxes, Switch gear box, etc
- ◆ Combination : Over 10,000 combinations
- ◆ Electric parameter :
Current Rating: 4A /125VAC, 2A/250VAC
Contact Resistance: 10 Milli-Ohms Max
Insulation Resistance: 500 Meg-Ohm Min (500VDC)
Dielectric Strength: 1500 VAC-1 Minute
- ◆ Feature / Strength :

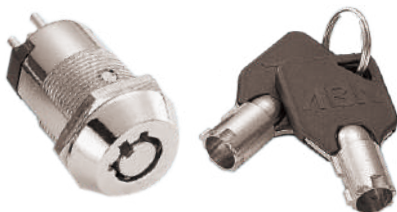
1. Master key system or different switch on position is available per request



Item No.	Key Rotated Direction	X	Key Rotated Direction Fig	Installation Hole	
10230012	A	30.8	<div>Key Pull Rotation Direction</div> 		
10230022	B or C				
10230014	A	38.2			
10230024	B or C				

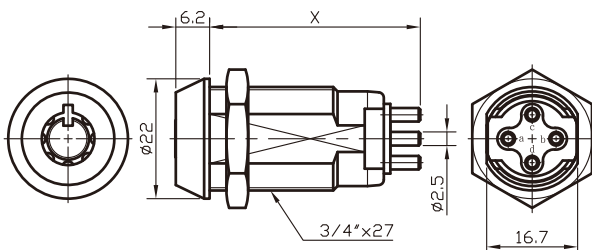
102301






Security Tubular Key Switch Lock



- ◆ Main Material : Brass or Zinc alloy housing & barrel
- ◆ Finish : Chrome plated. Contact & terminal with silver plated
- ◆ Application : Alarm system, Computer case, Charging meter, Security system, Electrical equipment, Electronic instrument, Garage Doors, Elevator and Escalator, Gaming & Slot machine, Vending machine, Control system, Control panels, Control boxes, Switch gear box, etc
- ◆ Combination : Over 10,000 combinations
- ◆ Electric parameter :
Current Rating: 4A /125VAC, 2A/250VAC
Contact Resistance: 10 Milli-Ohms Max
Insulation Resistance: 500 Meg-Ohm Min (500VDC)
Dielectric Strength: 1500 VAC-1 Minute
- ◆ Feature / Strength :

1. Master key system or different switch on position is available per request
2. Spring return function & UL certificate is also available



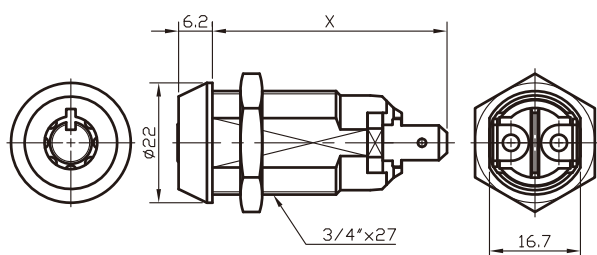
Item No.	Key Rotated Direction	X	Key Rotated Direction Fig	Installation Hole
10230112	A or B	31.3	<div><div>↑ Key Pull Rotation Direction</div><div></div><div></div></div>	<div></div>
10230122	C			
10230132	D			
10230114	B	38.7	<div></div> <div></div>	
10230124	C			
10230134	D			

102304

Security Tubular Key Switch Lock



- ◆ Main Material : Brass or Zinc alloy housing & barrel
- ◆ Finish : Chrome plated. Contact with silver plated & brass terminals
- ◆ Application : Alarm system, Computer case, Charging meter, Security system, Electrical equipment, Electronic instrument, Garage Doors, Elevator and Escalator, Gaming & Slot machine, Vending machine, Control system, Control panels, Control boxes, Switch gear box, etc
- ◆ Combination : Over 10,000 combinations
- ◆ Electric parameter :
Current Rating: 4A /125VAC, 2A/250VAC
Contact Resistance: 10 Milli-Ohms Max
Insulation Resistance: 500 Meg-Ohm Min (500VDC)
Dielectric Strength: 1500 VAC-1 Minute
- ◆ Feature / Strength :
1. Master key system or different switch on position is available per request
2. Spring return function & UL certificate is also available



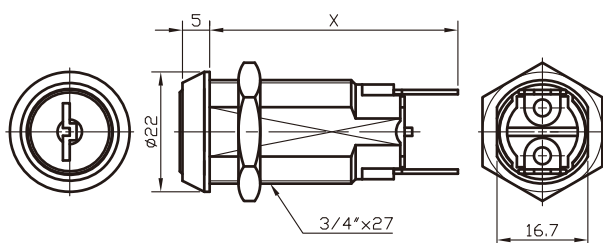
Item No.	Key Rotated Direction	X	Key Rotated Direction Fig	Installation Hole
10230412	A	35.7	Key Pull	
10230414	A or B or C or D	41.9 or 43.1	Rotation	
10230424	E	43.1	Momentary Direction	
			off on	
			A	
			B	
			C	
			D	
			E	

103302

Flat Key Switch Lock



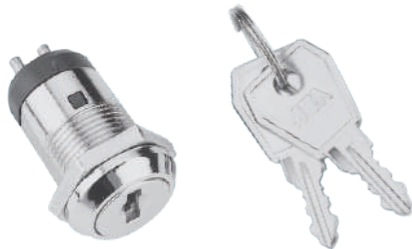
- ◆ Main Material : Zinc alloy housing & barrel
- ◆ Finish : Chrome plated. Contact with silver plated & brass terminals
- ◆ Application : Alarm system, Computer case, Charging meter, Security system, Electrical equipment, Electronic instrument, Garage Doors, Elevator and Escalator, Gaming & Slot machine, Vending machine, Control system, Control panels, Control boxes, Switch gear box, etc
- ◆ Combination : Over 100 combinations
- ◆ Electric parameter :
Current Rating: 4A /125VAC, 2A/250VAC
Contact Resistance: 10 Milli-Ohms Max
Insulation Resistance: 500 Meg-Ohm Min (500VDC)
Dielectric Strength: 1500 VAC-1 Minute
- ◆ Feature / Strength :
1. Different switch on position is available per request.
2. Spring return function & UL certificate is also available



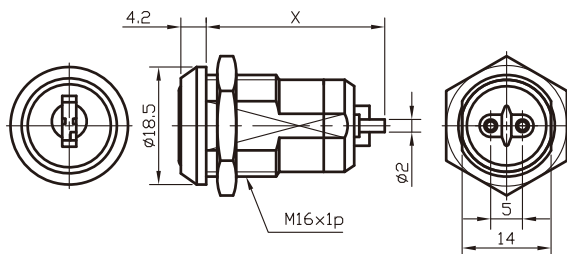
Item No.	Key Rotated Direction	X	Key Rotated Direction Fig	Installation Hole
10330210	A or B	45.6	Key Pull	
			Rotation	
			Momentary Direction	
			off on	
			A B	

103378

Flat Key Wafer (Miniature)



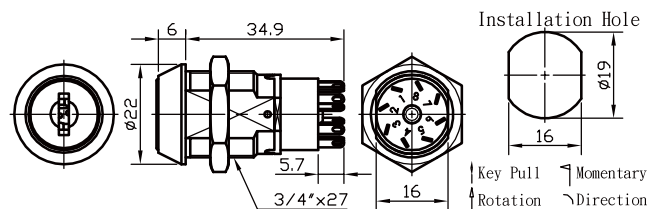
- ◆ Main Material : Housing and barrel with zinc alloy
- ◆ Finish : Chrome plated. Contact with silver plated & brass terminals
- ◆ Application : Security system, Alarm, Telephone, Control panels, Electrical equipment, Electronic instrument, Industry computer, Encryption devices, Heavy power equipment, Control Boxes, etc
- ◆ Combination : Over 50 combination
- ◆ Electric parameter :
 - Current Rating: 2A /125VAC, 1A/250VAC
 - Contact Resistance: 10 Milli-Ohms Max
 - Insulation Resistance: 500 Meg-Ohm Min (500VDC)
 - Dielectric Strength: 1000 VAC-1 Minute



Item No.	Key Rotated Direction	X	Key Rotated Direction Fig	Installation Hole
10337810	A	28.3		

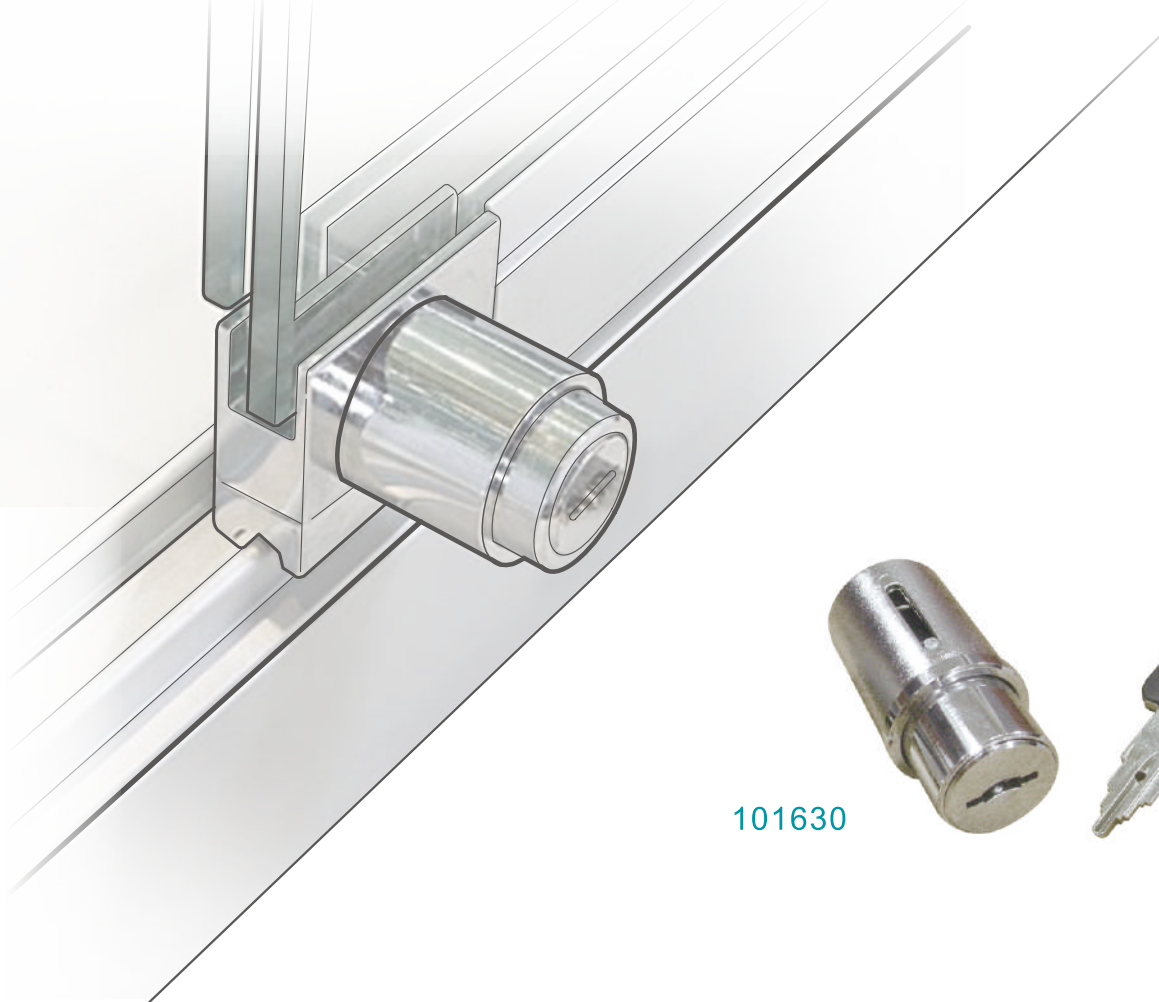
103305

Flat Key Switch Lock



- ◆ Main Material : Zinc alloy housing & barrel
- ◆ Finish : Nickel plated. Contacts & terminals with gold plated
- ◆ Application : Alarm system, Computer case, Charging meter, Security system, Electrical equipment, Electronic instrument, Garage Doors, Elevator and Escalator, Gaming & Slot machine, Vending machine, Control system, Control panels, Control boxes, Switch gear box, etc
- ◆ Combination : Over 200 key combination or all key alike
- ◆ Electric parameter :
 - Current Rating: 4A /125VAC, 2A/250VAC
 - Contact Resistance: 10 Milli-Ohms Max
 - Insulation Resistance: 500 Meg-Ohm Min (500VDC)
 - Dielectric Strength: 1500 VAC-1 Minute
- ◆ Feature / Strength :
 1. The distance between two terminals is biggest in the market , Terminals quantity upon customer's requests (max. 8 terminals) Key rotation degree and/or Key inserts way is optional by customers. Spring return function & UL certificate is also available

Item No.	Key position Fig.	Conductive position				Terminals
		A	B	C	D	
10330510001		7-8 , 3-4	8-1 , 4-5	1-2 , 5-6		8
10330510002		7-8	8-1	1-2		4
10330510003		8-1 , 4-5	1-2 , 5-6			6
10330510004		8-1	1-2			3
10330510005		8-1 , 4-5	7-8 , 3-4			6
10330510006		8-1	7-8			3
10330510007		8-1 , 4-5	1-2 , 5-6	7-8 , 3-4		8
10330510008		8-1	1-2	7-8		4
10330510009		8-1 , 4-5	7-8 , 3-4	1-2 , 5-6		8
10330510010		8-1	7-8	1-2		4
10330510011		8-1 , 4-5	1-2 , 5-6	7-8 , 3-4		8
10330510012		8-1	1-2	7-8		4
10330510013		8-1	1-2	7-8		4
10330510014		N/A	2-3 , 6-7			4
10330520003		6-7	7-8	8-1	1-2	5
10330520004		2-3	1-2	8-1	7-8	5
10330520005		N/A	2-3 , 6-7			4
10330520006		7-8	8-1	1-2 , 5-7		5



101630

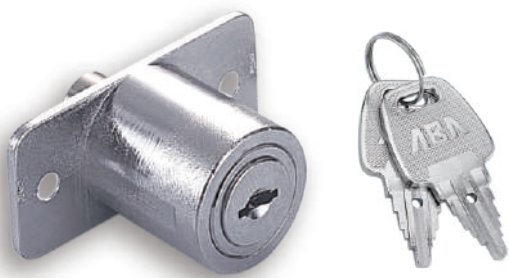


Plunger Lock

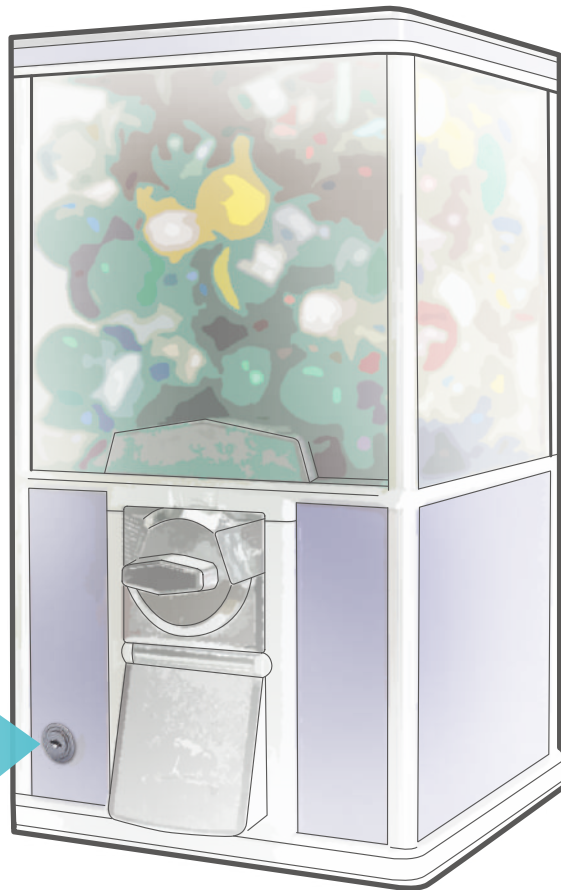
(Push-in)



102610



101635



Furniture • Gumball & Candy vending machine • Lightbox billboard • iPad Case



101615

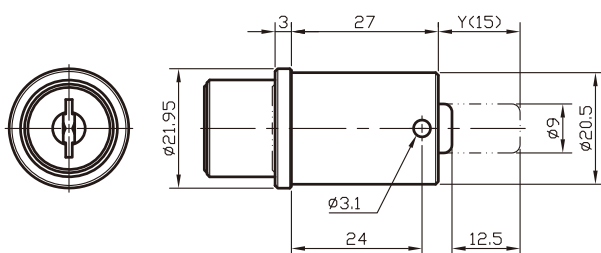


101630

High Security Pagoda Key Plunger(Push-in) Lock



- ◆ Main Material : Zinc alloy housing & barrel
- ◆ Finish : Chrome plated
- ◆ Application : Motorcycle, Car, Boat, Tool box, Lightbox billboard, Amusement machine, Gumball & Candy vending machine, Coffee machine, etc
- ◆ Combination : Over 10,000 combinations
- ◆ Feature / Strength :
 1. Master key system is available per request
 2. Lock barrel installed with 2 hardened steel anti-drill pins to prevent drill attempt
 3. Top security patented PAGODA system, with anti-picking function



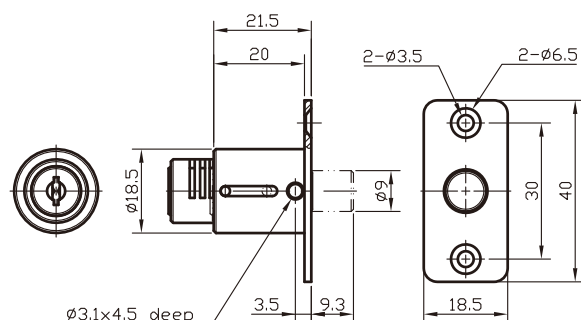
Item No.	Key Rotated Direction	Key Rotated Direction Fig	Y(15)
10163010	A	 Key Pull Rotation Direction	Various Sizes & Per customer request
10163020	B		
		 A	 Installation Hole $\phi 20.7$
		 B	

101635

High Security Pagoda Key Plunger(Push-in) Lock



- ◆ Main Material : Zinc alloy housing & barrel
- ◆ Finish : Chrome plated
- ◆ Application : Metal/Non-metal Wooden Doors, Tool box, Lightbox billboard, Furniture, Gumball & Candy vending machine, Coffee machine, Monitoring equipment, etc
- ◆ Combination : Over 100 combinations
- ◆ Feature / Strength :
 1. Master key system is available per request
 2. Lock barrel installed with 2 hardened steel anti-drill pins to prevent drill attempt
 3. Top security patented PAGODA system, with anti-picking function



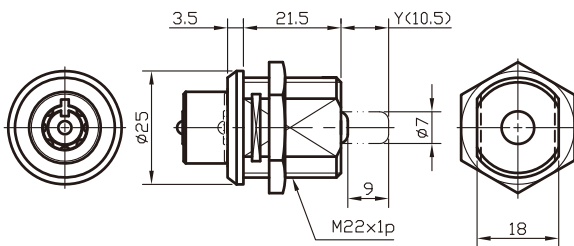
Item No.	Key Rotated Direction	Key Rotated Direction Fig	Installation Hole
10163510	A	 Key Pull Rotation Direction	 Installation Hole $\phi 18.7$
		 A	

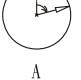
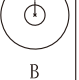
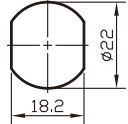
102610

Security Tubular Plunger (Push-in) Lock



- ◆ Main Material : Zinc alloy inner/outer housing & barrel
- ◆ Finish : Chrome / Nickel plated
- ◆ Application : Metal/Non-metal Wooden Doors, Tool box, Lightbox billboard, Trail equipment, Security access device etc
- ◆ Combination : Over 10,000 combinations
- ◆ Accessory : Housing nut or clip
- ◆ Feature / Strength :
 1. Locking bolt length could be changed per request



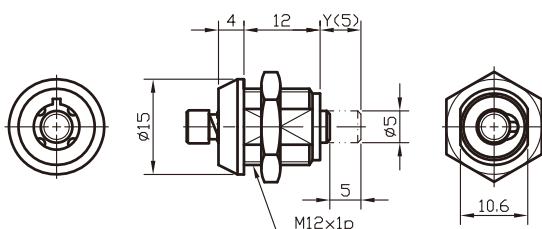
Item No.	Key Rotated Direction	Key Rotated Direction Fig	Y(10.5)
10261014	A or B	↑ Key Pull ↑ Rotation ↘ Direction	Various Sizes & Per customer request
		 	Installation Hole
			


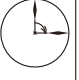
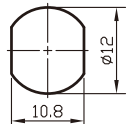
102615

Security Tubular Plunger (Push-in) Lock



- ◆ Main Material : Zinc alloy housing & head of barrel; Brass end of barrel
- ◆ Finish : Chrome / Nickel plated
- ◆ Application : Lightbox billboard, Monitoring equipment, iPad case, Kiosk, Hanger, Parking device, etc
- ◆ Combination : Over 500 combinations
- ◆ Accessory : Housing nut or clip
- ◆ Feature / Strength :
 1. Lock bolt length could be changed per request



Item No.	Key Rotated Direction	Key Rotated Direction Fig	Y(5)
10261510	A	↑ Key Pull	Various Sizes & Per customer request
10261520	B	↑ Rotation	Installation Hole
		↘ Direction	
		 	



101531



102501



108501



102522

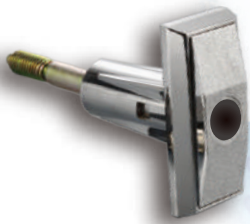


102501

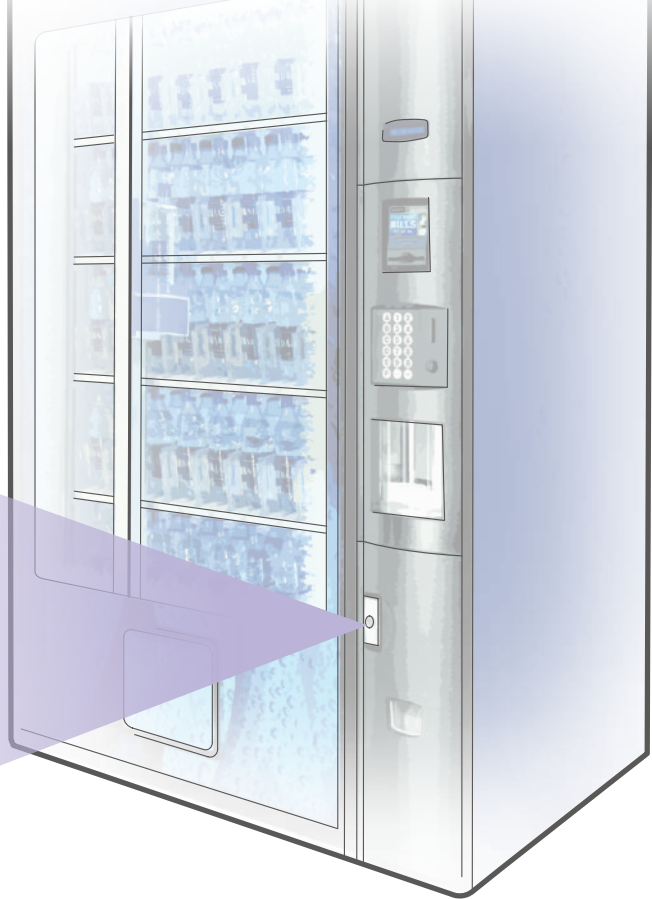




100599
(Cam Style)



100599
(Stud Style)



Handle Lock

Vending Machine



102582



100585

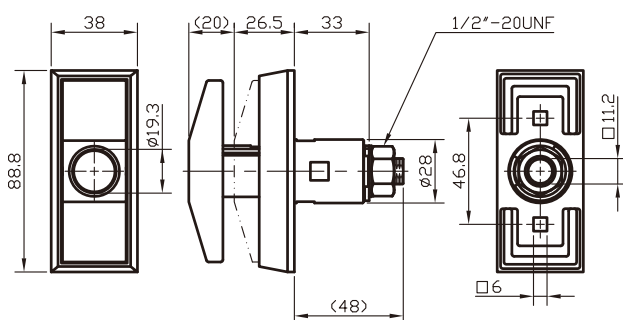


109582



100585

Quarter Turn T-handle (Cam style)

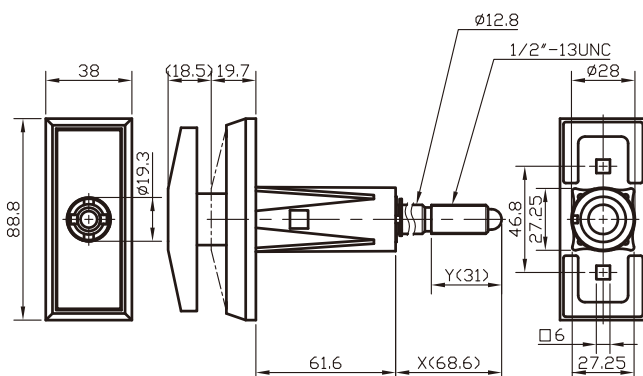


- ◆ Main Material : Zinc alloy
- ◆ Finish : Bright Chrome/Black E-coating
- ◆ Application : Vending machine, Gaming machine, Intelligent terminal, Electrical equipment, Kiosk, Change Machine, Storage cabinet, Coffee machine, etc
- ◆ Optional part : Cylinder or Cam
- ◆ Feature / Strength :
 1. Most of lock cylinders from market can be fit into this T-Handle
 2. Following models of ABA's lock cylinder can be used with this T-Handle 101531、#102501、#102522、#108501...etc
 3. This is a shorter type T-Handle, applicable for the thinner door of vending / gaming machine
 4. Various specs cam upon specification
 5. T-handle (Stud style) is available

Item No.	Key Rotated Direction	Key Rotated Direction Fig	Installation Hole
10058500			

100599

T-handle For Vending (Stud style)



- ◆ Main Material : Zinc alloy
- ◆ Finish : Bright Chrome/Black E-coating
- ◆ Application : Vending machine, Gaming machine, Intelligent terminal, Electrical equipment, Kiosk, Change Machine, Storage cabinet, Coffee machine, etc
- ◆ Optional part : Cylinder or Stud
- ◆ Feature / Strength :
 1. Most of lock cylinders from market can be fit into this T-Handle
 2. Following models of ABA's lock cylinder can be used with this T-Handle #101531、#102501、#102522、#108501...etc
 3. Stud length is optional
 4. T-handle (Cam style) is available

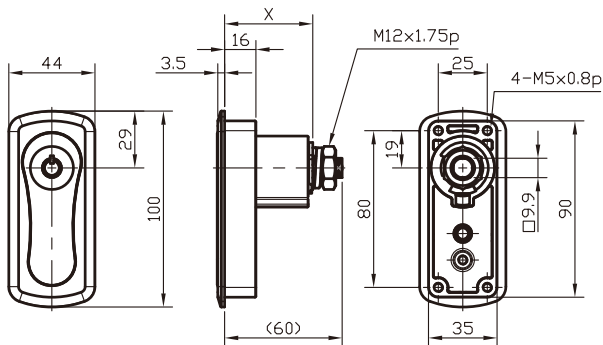
Item No.	Key Rotated Direction	X & Y	Key Rotated Direction Fig	Installation Hole
10059900-1		Various Sizes & Per customer request		

102582

T-handle Lock With Tubular Key System (Cam style)



- ◆ Main Material : Zinc alloy
- ◆ Finish : Bright Chrome/Black E-coating
- ◆ Application : Vending machine, Gaming machine, Intelligent terminal, Electrical equipment, Kiosk, Change Machine, Storage cabinet, Coffee machine, etc
- ◆ Optional part : Cam
- ◆ Feature / Strength :
 1. The handle is only 4mm higher than the door surface after installation



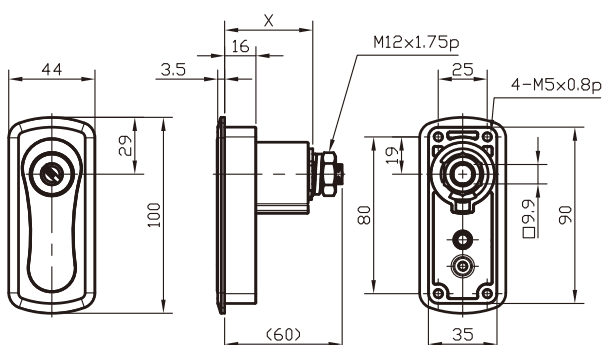
Item No.	Key Rotated Direction	X	Key Rotated Direction Fig	Installation Hole
10258210	A	45	<p>Key Pull Rotation Direction</p> <p>A</p>	<p>36 16 4-R4</p>

109582

T-handle Lock With Dimple Key System (Cam style)



- ◆ Main Material : Zinc alloy
- ◆ Finish : Bright Chrome/Black E-coating
- ◆ Application : Vending machine, Gaming machine, Intelligent terminal, Electrical equipment, Kiosk, Change Machine, Storage cabinet, Coffee machine, etc
- ◆ Optional part : Cam
- ◆ Feature / Strength :
 1. The handle is only 4mm higher than the door surface after installation



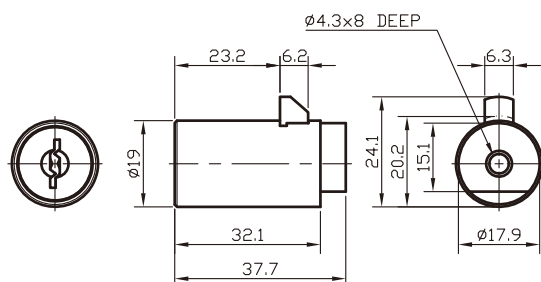
Item No.	Key Rotated Direction	X	Key Rotated Direction Fig	Installation Hole
10958210	A	45	<p>Key Pull Rotation Direction</p> <p>A</p>	<p>36 16 4-R4</p>

101531

High Security Pagoda Cylinder



- ◆ Main Material : Zinc alloy housing & barrel
- ◆ Finish : Bright Chrome/black E-coating
- ◆ Application : Vending machine, Gaming machine, ATM machine, Intelligent terminal, Electrical equipment, etc
- ◆ Combination : Over 10,000 combinations
- ◆ Feature / Strength :
 1. Master key system is available per request
 2. Lock barrel installed with 2 hardened steel anti-drill pins to prevent drill attempt
 3. Top security patented PAGODA system, with anti-picking function



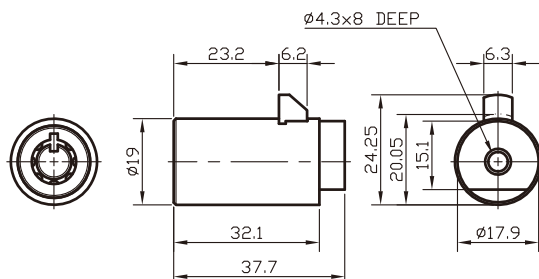
Item No.	Key Rotated Direction	Key Rotated Direction Fig	Installation Hole
10153110	A	↑ Key Pull ↓ Rotation ↘ Direction A	

102501

Security Tubular Cylinder



- ◆ Main Material : Zinc alloy housing & barrel
- ◆ Finish : Bright Chrome
- ◆ Application : Vending machine, Gaming machine, ATM machine, Intelligent terminal, Electrical equipment, etc
- ◆ Combination : Over 10,000 combinations



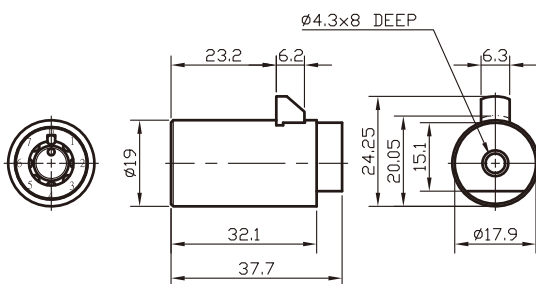
Item No.	Key Rotated Direction	Key Rotated Direction Fig	Installation Hole
10250110	A	↑ Key Pull ↓ Rotation ↘ Direction A	
10250120	B		
		 B	

102522

Patented Magic Cylinder (Tubular Key System)



- ◆ Main Material : Zinc alloy housing & barrel
- ◆ Finish : Bright Chrome
- ◆ Application : Vending machine, Gaming machine, ATM machine, Intelligent terminal, Electrical equipment, etc
- ◆ Combination : Over 10,000 combinations
- ◆ Feature / Strength :
 1. Patented cylinder, with security management function
 2. Cylinder size same as ABA item #102501 which is popular in the vending industry



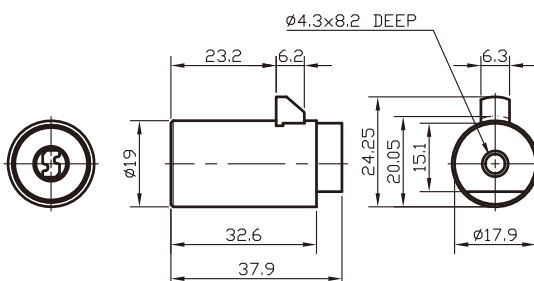
Item No.	Key Rotated Direction	Key Rotated Direction Fig	Installation Hole
10252210	A	<p>Key Pull Rotation Direction</p> <p>A</p>	<p>19.2</p>

108501

High Security Finland Cylinder

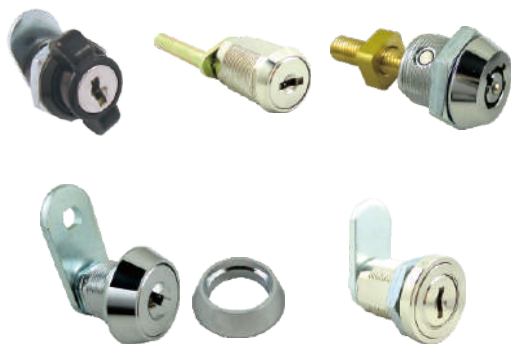


- ◆ Main Material : Zinc alloy housing & barrel
- ◆ Finish : Bright Chrome
- ◆ Application : Vending machine, Gaming machine, ATM machine, Intelligent terminal, Electrical equipment, etc
- ◆ Combination : Over 10,000 combinations
- ◆ Feature / Strength :
 1. Cylinder size same as ABA item #102501 which is popular in the vending industry



Item No.	Key Rotated Direction	Key Rotated Direction Fig	Installation Hole
10850110	A	<p>Key Pull Rotation Direction</p> <p>A</p>	<p>19.2</p>

Others



Accessories



Cam Lock

Furniture Lock

Combination Lock

Switch Lock

Plunger
(Push-in) Lock

Locks Cylinder
Handle Lock

Accessories
& Others



High Security PAGODA System

This system can be applied to any item:

Locked :

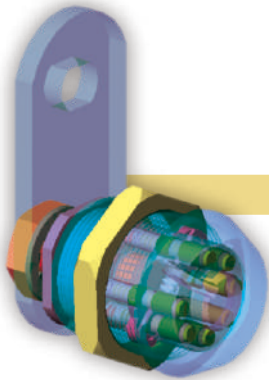
The key is disengaged from the lock so that the locking disks are biased to the original position by means of a number of springs mounted between the locking disks.

Unlock :

A key is engaged in a corresponding lock. So that a number of locking discs mounted in the lock are pushed to a predetermined position by means of some shoulders formed on the key.

Advantages of Pagoda Lock :

- 1.Lock without using a key.
- 2.Maximum(Top)security.
- 3.Flexibility(More key combination).
- 4.Bi-directional key insertion.
- 5.Changable Core



ABACO LOCK SYSTEM

ABACO Lock is a tubular key lock. What makes it unique is that the specially designed structure built in ABACO Lock makes it difficult for being picked by prying, a significant improvement for traditional tubular key lock.

High Security Master Key System

Traditional System :

1. Limited to the barrel length and size.
2. The combination cut on the key is obvious and can therefore be easily duplicated and the security of whole system is gone. Not only a single lock.
3. It is also a threat to the security that key blanks can be acquired on the market with no difficulty.
4. Lock of high cost.

Innovative System :

1. Any size lock will do.
2. No combination can be read on the key. So there is no way to duplicate it and the security of the whole system can be ensured.
3. Master key blanks of special design cannot be purchased on the market at all. Which is of highest security assurance.
4. Lock of far lower cost than traditional ones.





ABA UFO INTERNATIONAL CORP.

P.O. BOX 222 XINZHUANG DIST, HOUGANG RD., NEW TAIPEI CITY 24299, TAIWAN.

<http://www.abalocks.com>

e-mail:mkt@abalocks.com

TEL:+886-2-2906-8181

FAX:+886-2-2903-1942